

CUPS Driver Software Manual for macOS

Supported Models

- ☐ ***Thermal Printers***
- ☐ ***Portable Printers***
- ☐ ***Dot Matrix Printers***

Notice:

- Bluetooth® wordmark and logo are registered trademarks owned by Bluetooth SIG, Inc.
- macOS, Mac, OS X, Mac mini, iMac are trademarks of Apple Inc., registered in the U.S. and other countries.
- The information in this manual is subject to change without notice.
- STAR MICRONICS CO., LTD. has taken every measure to provide accurate information, but assumes no liability for errors or omissions.
- STAR MICRONICS CO., LTD. is not liable for any damages resulting from the use of information contained in this manual.
- Reproduction in whole or in part is prohibited.

Table of Contents

1. Installation/Uninstallation Procedures	7
1.1 Installing Star CUPS Drivers.....	7
1.2 Registering the Printer	11
1.3 Uninstalling Star CUPS Drivers	19
2. Setting Printer Functions.....	22
2.1 Function List	23
2.2 Star Micronics Cloud	41
3. Setting the Paper Size	44
3.1 Setting the Paper Size.....	44
3.2 Settable Paper Sizes	45
4. Guidelines for Using an Ethernet Environment	48
4.1 Setting a Temporary IP Address.....	48
4.2 Setting the IP Address << StarPrinter TELNET Utility >>	50
5. Guidelines for Using the lpr Command	53
5.1 Function List	54
6. Confirmed Operating Environments	63
7. Revision History	64

Introduction

This manual describes the setup procedures and the functional outline of the Star CUPS driver which use Star Printers.

The printer's IP address must be set in advance to use a printer that supports LAN using this driver. If your LAN environment does not allow acquisition of an IP address from a DHCP server, set the IP address to the printer in advance. See 4. Guidelines for Using an Ethernet Environment for details on how to set the IP address for the printer.

Limitation for TSP100LAN: Cannot print files with the names are over 80 characters.

This software dose not support ESC/POS emulation.

Operating Environment

◆ Operating System

- ◆ macOS 10.15
- ◆ macOS 10.14
- ◆ macOS 10.13
- ◆ macOS 10.12
- ◆ Mac OS X 10.11

◆ Target Model and Firmware Versions

Limitations for Bluetooth models

- The communication of Bluetooth interface is "SPP".
- The maximum page length printable by Bluetooth printers is 1500 mm.

Thermal Printers

Target Model	Interface	Printer Firmware Version
TSP100U, TSP100IU, TSP100GT TSP100IIU series	USB	Ver 1.0 or later
TSP100LAN, TSP100IIILAN series	LAN	Ver 1.0 or later
TSP100IIIW series	WLAN	Ver 1.0 or later
TSP100IIIBI series	Bluetooth	Ver 1.0 or later
TSP650II series	USB / LAN / Bluetooth	Ver 1.0 or later
TSP700II series	USB / LAN / Bluetooth	Ver 5.0 or later
TSP800II series	USB / LAN / Bluetooth	Ver 2.0 or later
FVP10 series	USB / LAN / Bluetooth	Ver 2.0 or later
mPOP series	USB/ Bluetooth	Ver 1.0.1 or later
mC-Print3 series	USB / LAN / Bluetooth	Ver 1.0 or later (MCP31LB and MCP31L) Ver 2.0 or later (MCP30) Ver 3.0 or later (MCP31CB and MCP31C)
mC-Print2 series	USB / LAN / Bluetooth	Ver 1.0 or later

Portable Printers

Target Model	Interface	Printer Firmware Version
SM-L200 series	USB ^{*1} / Bluetooth	Ver 1.0 or later
SM-L300 series	USB / Bluetooth	Ver 1.0 or later
SM-S220i series	Bluetooth	Ver 3.0 or later
SM-S230i series	USB / Bluetooth	Ver 1.0 or later
SM-T300i series	Bluetooth	Ver 3.0 or later
SM-T300 series	Bluetooth	Ver 4.0 or later
SM-T400i series	Bluetooth	Ver 3.0 or later

^{*1} *USB communication will be supported with firmware version 2.0 or later.

Dot Matrix Printers

Target Model	Interface	Printer Firmware Version
SP700 Series	USB / LAN / Bluetooth	Ver 4.0 or later

Kiosk Printers

Target Model	Interface	Printer Firmware Version
SK1-211/221 series	USB	Ver 1.1 or later
SK1-211/221 Presenter series	USB	Ver 1.1 or later
SK1-311/321 series	USB	Ver 1.1 or later
SK1-311 Presenter series	USB	Ver 1.1 or later

◆ When using SM-S220i, SM-S230i, SM-T300i, SM-T300 and SM-T400i

This is software of StarPRNT emulation exclusive use.

To use the StarPRNT emulation, use the printer with "StarPRNT".

☆ Simple method of switching over between ESC/POS and StarPRNT emulation modes

1. Turn the printer power and open the printer cover.
2. Press and hold the POWER button and the FEED button simultaneously. As soon as the ERROR lamp flashes five times, release the buttons. The emulation switchover takes place automatically.
3. After setting a paper, close the printer cover. The set emulation mode is printed out.

ESC/POS mode: EMU = ESC/POS

StarPRNT mode: EMU = StarPRNT

If the emulation mode is not switched correctly, repeat the above steps 1 to 3.

At that time, in step 2, make sure not to release the buttons until the lamp completes the 5th flash.

4. Please reboot the printer after switching the emulation between StarPRNT and ESC/POS.

*It will be valid after rebooting the printer.

◆ When using SM-S220i, SM-S230i, SM-T300i, SM-T300 and SM-T400i

Please set the communication mode of the printer as follows.

F/W Version 3.X	Bluetooth
F/W Version 4.0 or later	Bluetooth(Mac)

☆ Simple method of switching the communication modes

<Bluetooth (Mac) ⇔ Bluetooth(Auto)>, <Bluetooth ⇔ Bluetooth(iAP)>

Press and hold the MODE button and the FEED button for at least five seconds until ERROR LED flashes five times. Continuously hold down the MODE button and the FEED button even until the buzzer sounds twice. The Bluetooth communication mode switches.

◆ When using the Kiosk Printers (SK1 series and SK1 Presenter series)

This is software of StarPRNT emulation exclusive use.

To use the StarPRNT emulation, use the printer with “StarPRNT”.

☆ Simple method of switching over between ESC/POS and StarPRNT emulation modes

1. In condition the power is off, the power should be turned on while pushing FEED/SELECT button opening the paper cover.
2. Green and Red LEDs are turned off.
3. StarPRNT emulation ⇔ Green LED is turned on in case of ESC/POS emulation switching.
4. ESC/POS emulation ⇔ Red LED is turned on in case of StarPRNT emulation switching.
5. When FEED button and SELECT button are released, the printer is initialized and operated with the selected emulation.

1. Installation/Uninstallation Procedures

Cautions :

- The account with administrative privilege for the PC should install/uninstall this driver.
- You will need to restart your computer when the installation has finished. Please close all running applications before starting the installation.

1.1 Installing Star CUPS Drivers

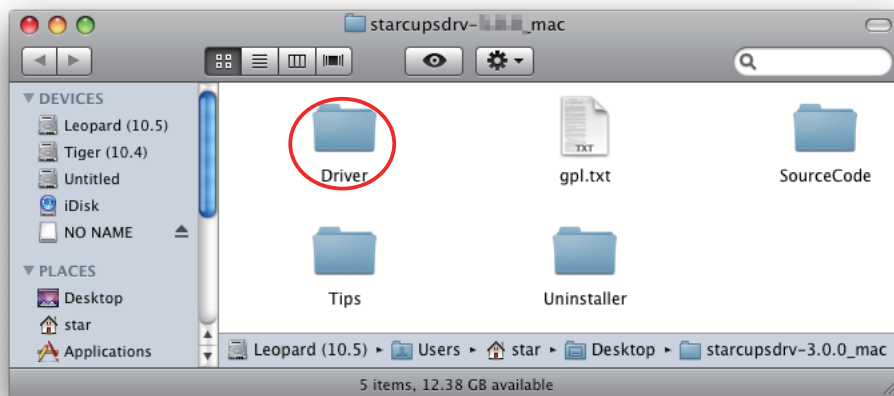
To install the driver, proceed as follows.

Important : When using a USB interface, turn on the printer's power after performing "1.1 Installing Star CUPS Drivers".

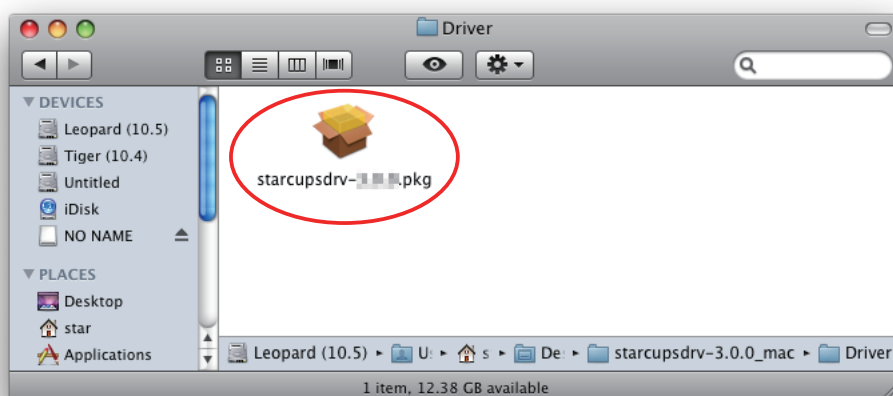
1. Place the "starcupsdrv-x.xx.x_mac_yyyymmdd.zip" file on your desktop and expand it by double-clicking on the file.



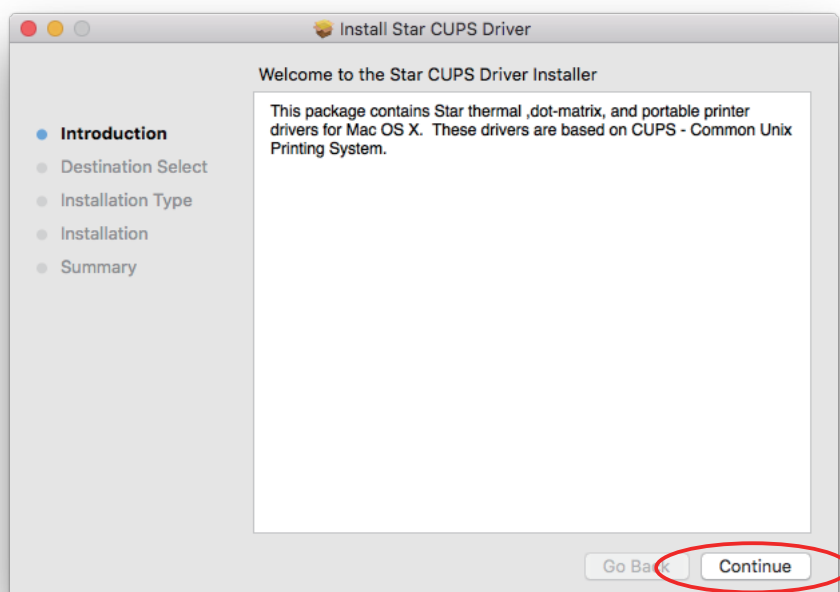
2. The screen below appears by double-clicking the expanded <starcupsdrv-x.xx.x_mac> file. Click on the "Driver" folder to open it.



3. The screen below is displayed.
Double-click <starcupsdrv-x.xx.x.pkg> to begin the installation.



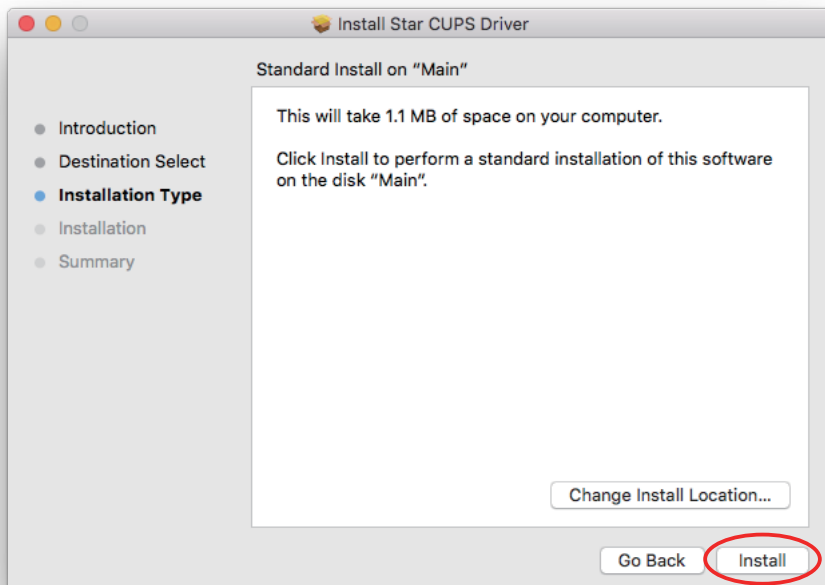
4. The following window is displayed.
Click [Continue].



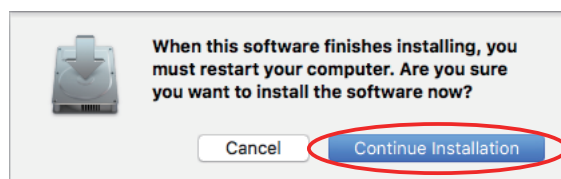
5. Select the harddisk to install with the program, then click [Continue].



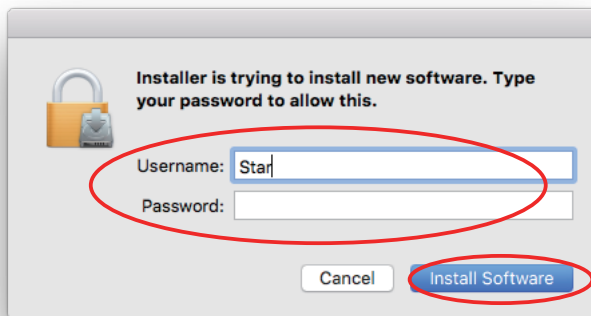
6. Click [Install] to start the installation.



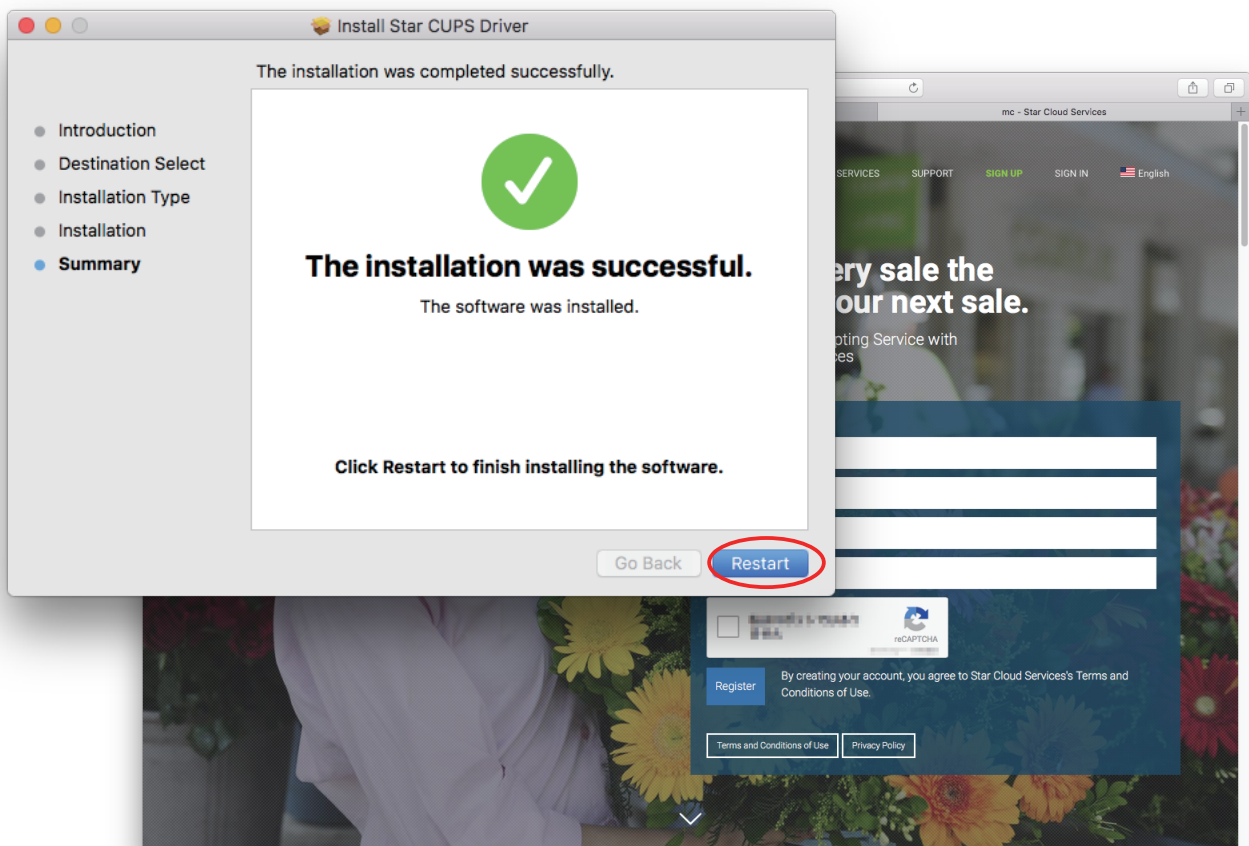
7. A confirmation message appears indicating that you need to restart your computer after the installation. If there is no problem, click [Continue installation].



8. If the confirmation window shown below is displayed, enter the user name and password having administrator rights, then click [Install Software].



9. The installation ends successfully.
When the installation has ended successfully, the window shown below is displayed.
And the website of Star Micronics Cloud will appear in the new browser window. You can register your Star Micronics Cloud account from this page to use our cloud services.
Please click [Restart] and restart your computer.



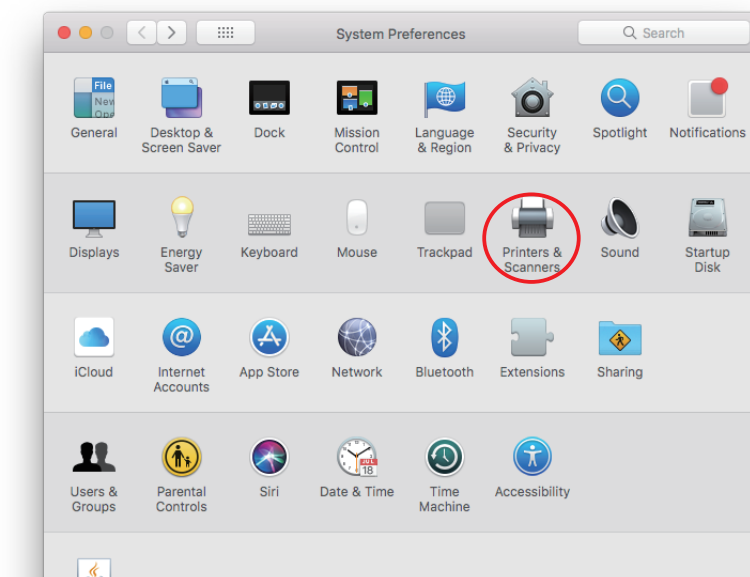
Note: Star Cloud Services does not support dot matrix printers.

1.2 Registering the Printer

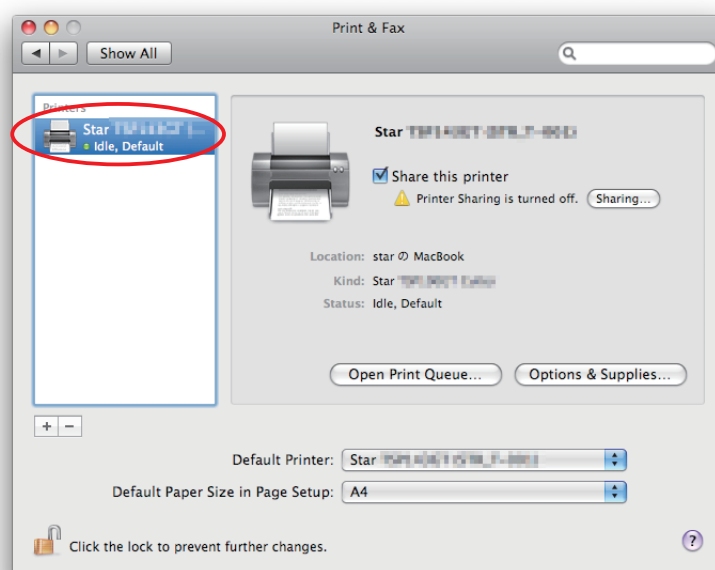
Procedures for registering the printer differ according to the type of interface you use. See the page relating to your environment.

1.2.1 When using a USB Interface

1. In the Apple mark in the menu bar, open [System Preferences] and click on the [Printers & Scanners] icon.



2. Connect the printer, and then turn on the printer's power switch.
The Plug and Play feature detects the connection of the printer hardware and automatically installs the driver software.
3. If the name of the specified printer is added to the printer list, the printer has been added.

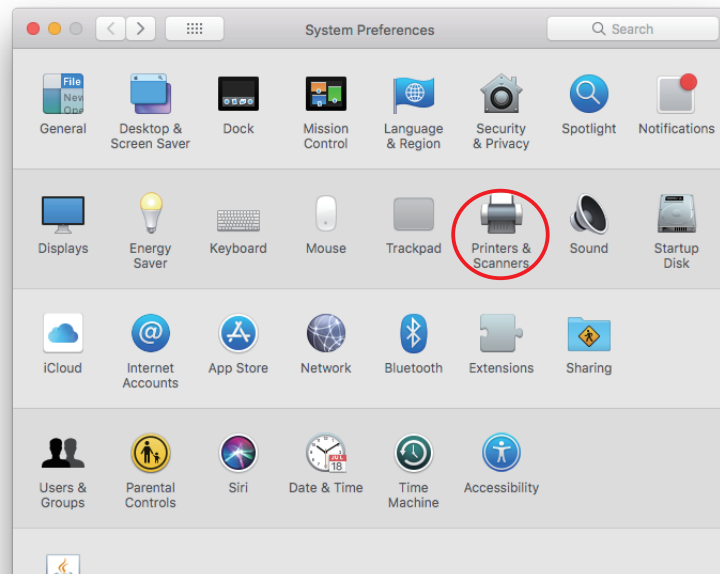


1.2.2 When using Ethernet Interface

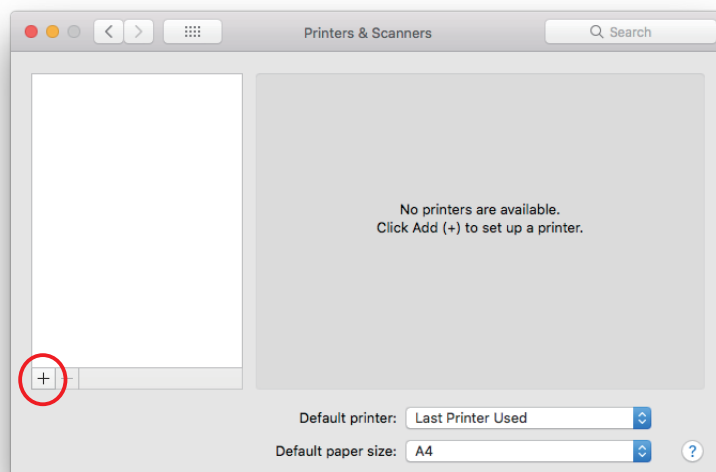
Note : When using IFBD-HI01X, LPR must be set Enable from WebUI.

Please refer to the "Set-up Manual for IFBD-HI01X" for details.

1. In the Apple mark in the menu bar, open [System Preferences] and click on the [Printers & Scanners] icon.



2. The Print & Fax window appears.
Click on [+].

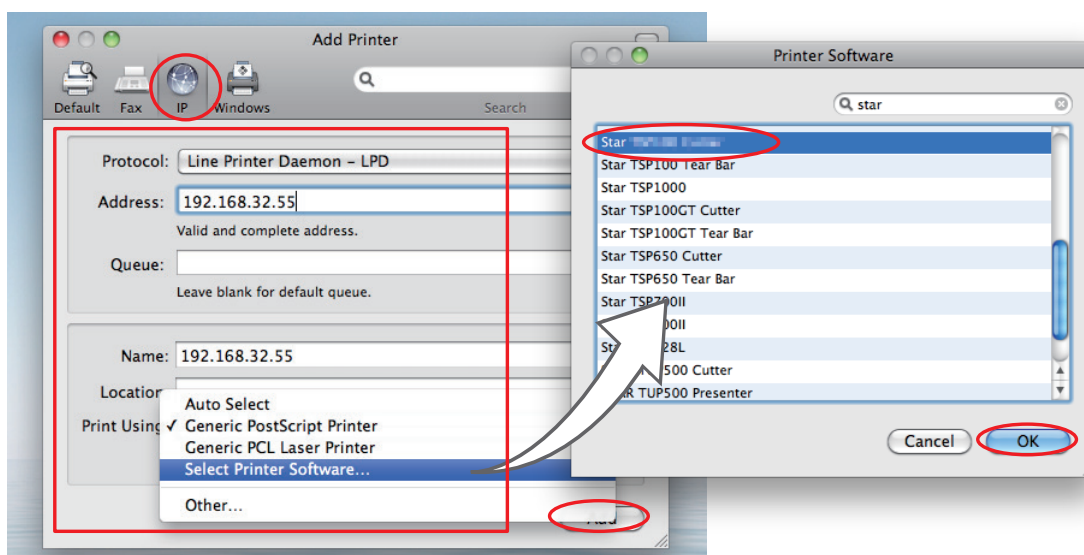


3. From the "IP", make the following settings and click on [Add].

- Protocol: Line Printer Daemon - LPD
 Address: IP address of printer being set (Check in self-print)
 Queue: Any character string (Printer cannot be used if left blank.)
 Name: Any character string (The IP address is automatically input by default.)
 Print Using: "Select the driver to use..." or "Select printer software..."
 Select the driver to use.

Point! The correspondence table for printer models and drivers is shown below.

Series	Model	Driver
TSP100 series	TSP143LAN, TSP143IIIW, TSP143IIILAN	Star TSP100 Cutter (en)
TSP650II series	TSP654II	Star TSP650 Cutter (en)
TSP700II series	TSP743II	Star TSP700II (en)
TSP800II series	TSP847II	Star TSP800II (en)
FVP10 series	FVP10	Star FVP10 (en)
mC-Print3 series	MCP30	Star MCP30 (en)
	MCP31L, MCP31LB, MCP31C, MCP31CB	Star MCP31 (en)
mC-Print2 series	MCP20, MCP20B	Star MCP20 (en)
	MCP21LB	Star MCP21 (en)
SP700 series	SP742	Star SP700 Cutter (SP742) (en)
	SP747	Star SP700 Cutter (SP747) (en)
	SP712	Star SP700 Tear Bar (SP712) (en)
	SP717	Star SP700 Tear Bar (SP717) (en)

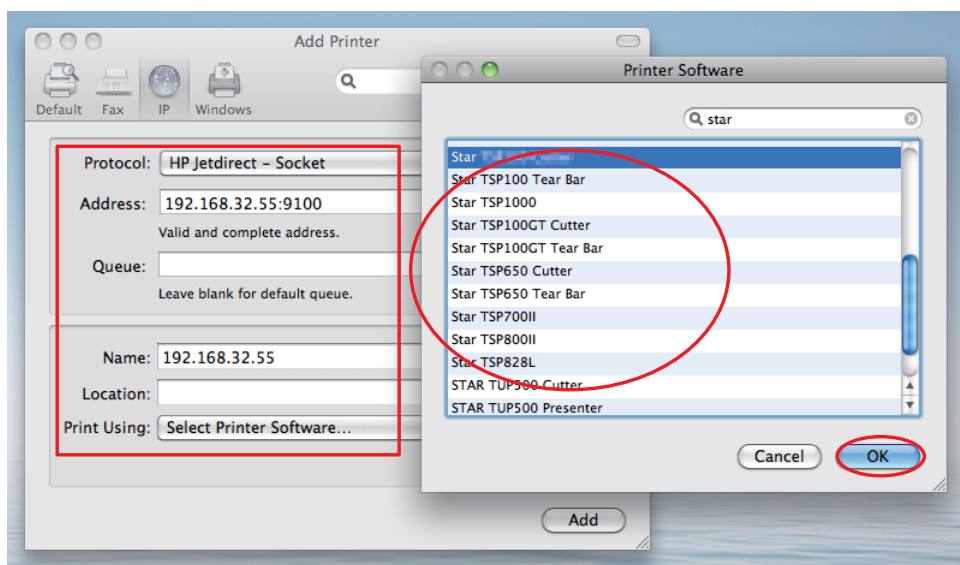


Point! When using port 9100, set the following.

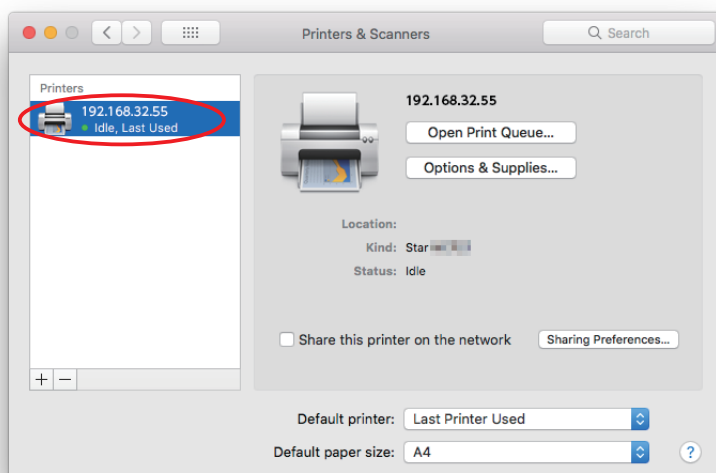
Protocol: HP Jet Direct - Socket

Address: [IP address of printer being set] : 9100


Print Using: "Select the driver to use..." or "Select printer software..."
Select the driver to use.



4. If the name of the specified printer is added to the printer list, the printer has been added.



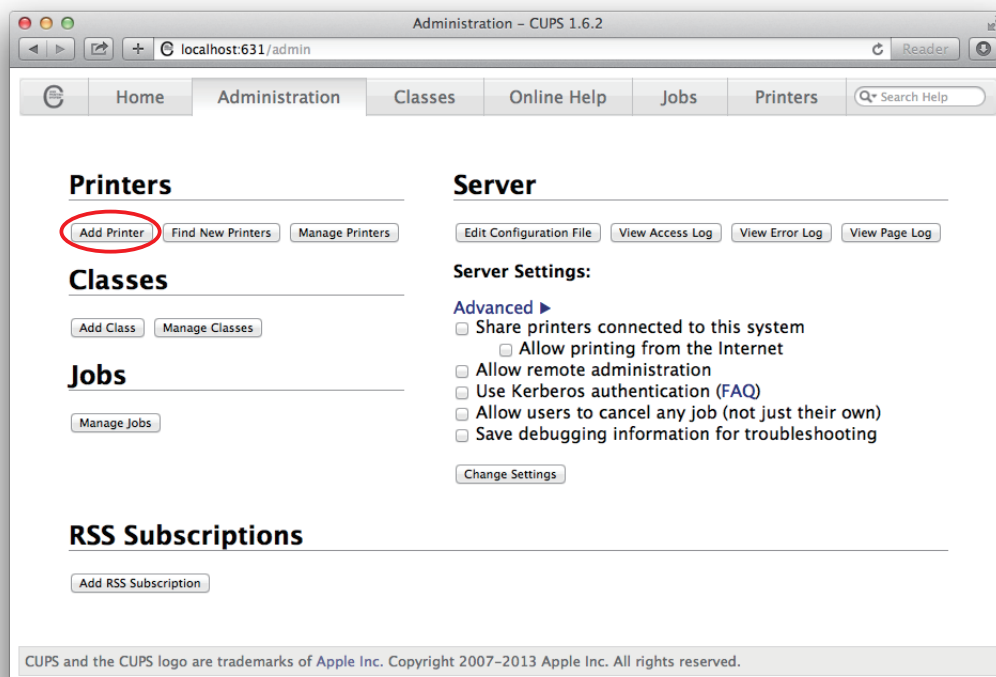
1.2.3 With the Bluetooth Interface

1. To pair them with the bluetooth printer, proceed as follows.
 - 1) Turn the printer power ON.
 - 2) **When using TSP650II, TSP700II, TSP800II, FVP10 and SP700**
Hold down the PAIR button of the bluetooth card for more than 10 seconds to set the pairing mode of the printer.
 - 3) Click Bluetooth icon , and select "Set up new device". When click "Forward", the system find the printer.
 - 4) Select the printer which is displayed in the Serch panel, and click "Continue".
When using the thermal printers and the dot matrix printers
The system start the pairing. the pairing is unsuccessful, please try again.
 - 5) **When using the portable printers**
Click [Passcode Option], and enter Passcode (PIN code) of printer and click [OK]. The system start the pairing. If the pairing is unsuccessful, please try again.
2. Open your favorite web browser and navigate to "http://localhost:631/admin".

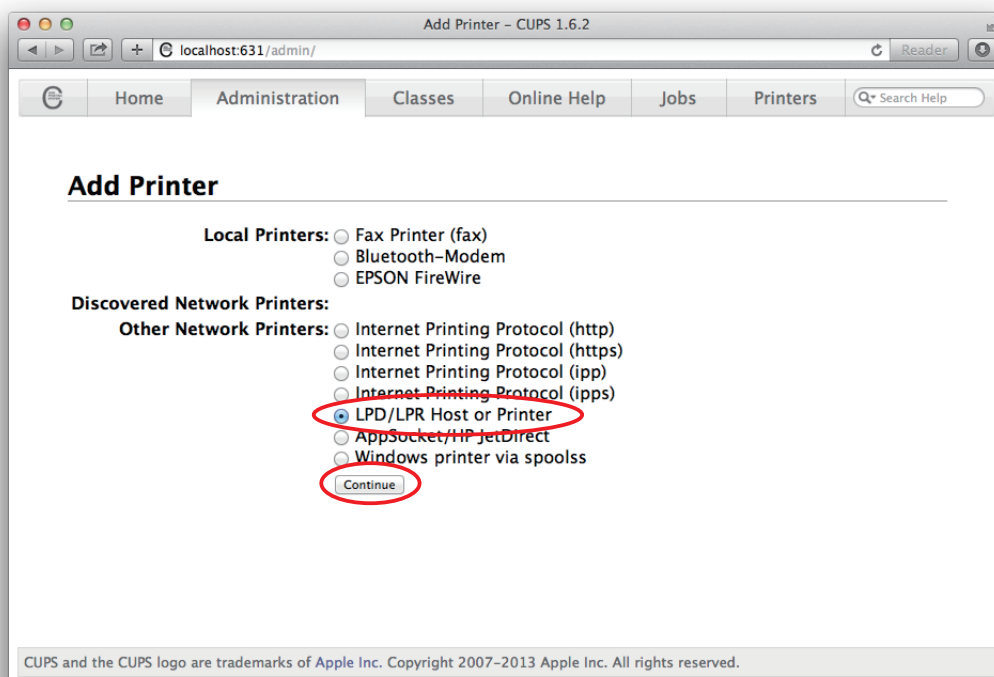
Point! When accessing the CUPS management screen for the first time, you cannot access it as the web interface is disabled.
Please execute the command as below from [Utility]-[Terminal].

cupctl WebInterface=yes

3. Click "Add Printer".
Note: When a dialog box is displayed requesting certification, enter the root password and press [Yes].



4. Select the "LPD/LPR Host or Printer". Then click "Continue".

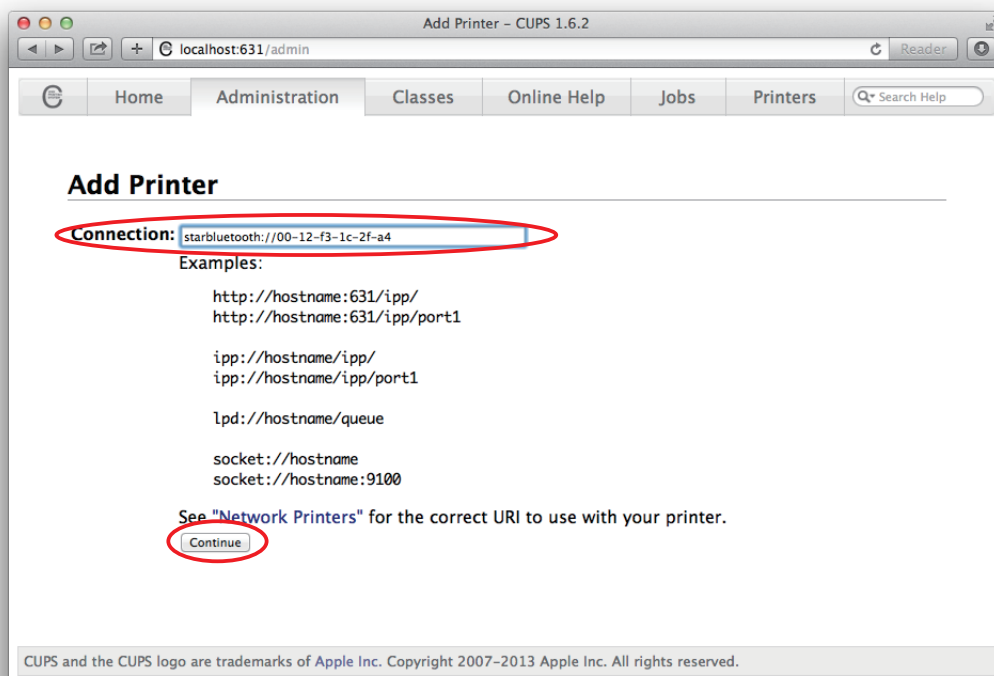


5. Specify the device URI for the printer as shown below and click "Continue".

starbluetooth://<<Bluetooth Address>>

ex. starbluetooth://00-12-f3-1c-2f-a4

* For Potable Printer, 'starmobilebluetooth' can also be used.

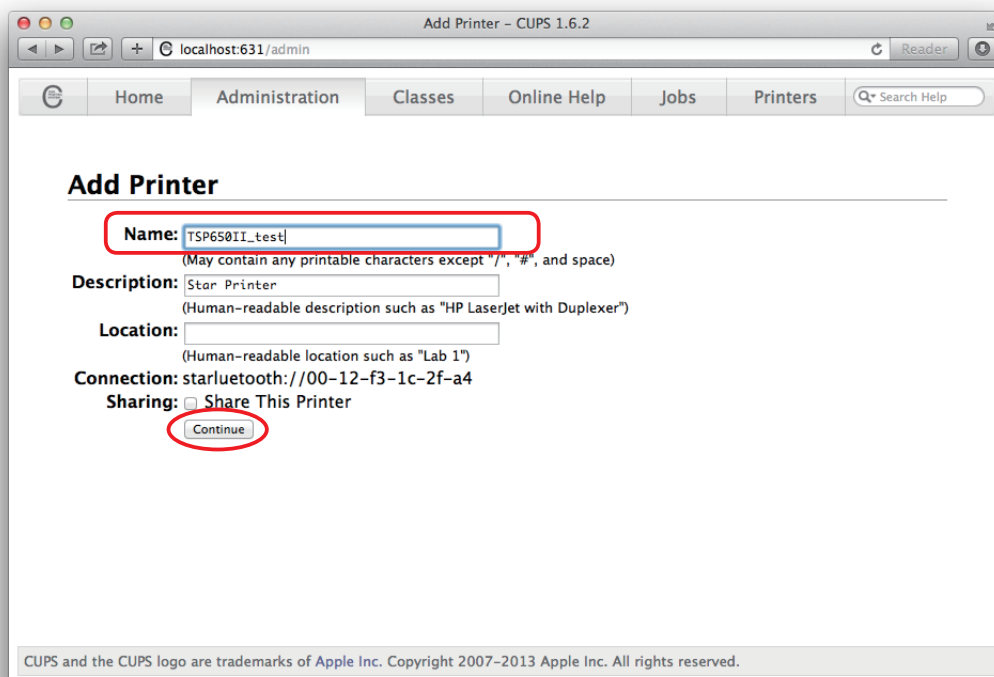


Point!

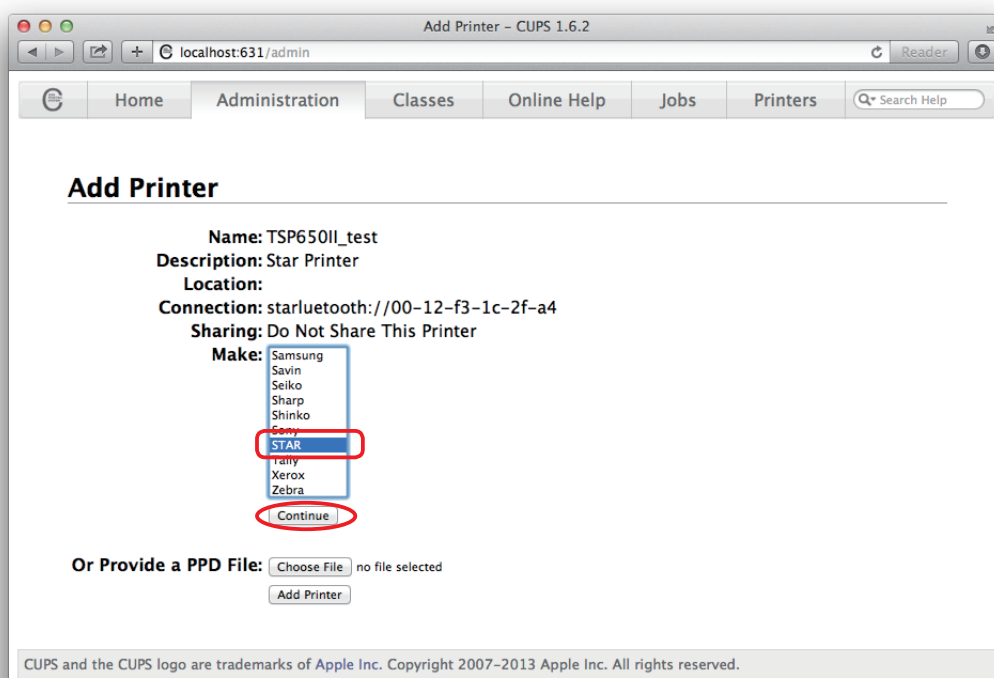
The Bluetooth address is included in the Bluetooth information printed by self-print (by powering on while pressing the Feed button*).

* When using SP700: When the buzzer sounds once, release the FEED button.

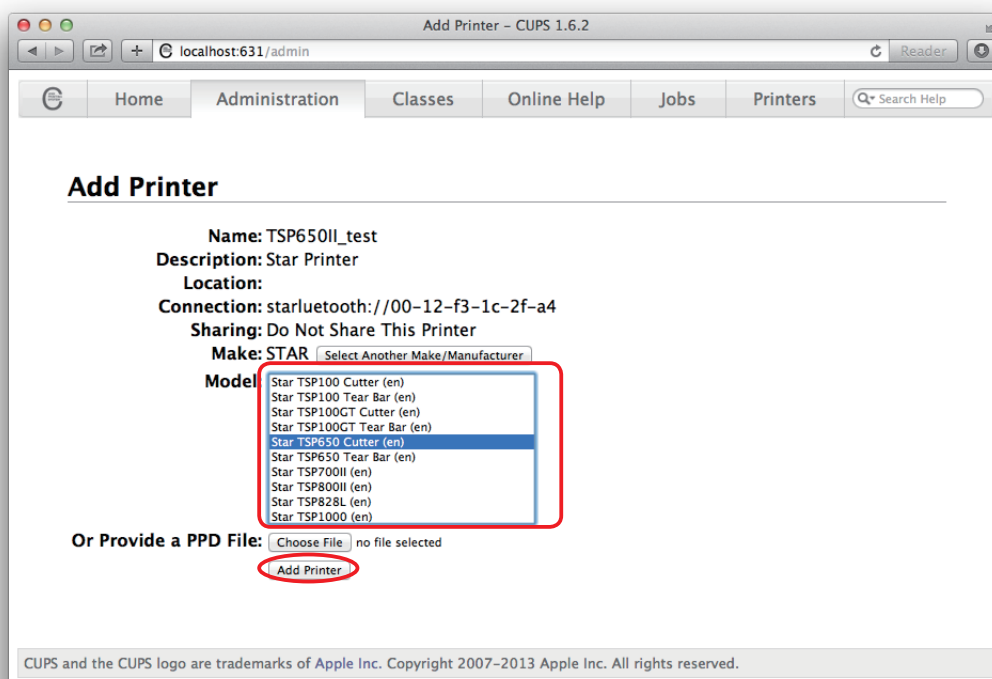
6. In the Add Printer screen, enter the printer name, location and description. Then click "Continue". Location and Description can be left blank.



7. Select "STAR" as the Make. Then click "Continue".



8. Select the printer model. Then click "Add Printer".



Point! The correspondence table for printer models and drivers is shown below.

Series	Model	Driver
TSP100 series	TSP143IIBI	Star TSP100 Cutter (en)
TSP650II series	TSP654II	Star TSP650 Cutter (en)
TSP700II series	TSP743II	Star TSP700II (en)
TSP800II series	TSP847II	Star TSP800II (en)
FVP10 series	FVP10	Star FVP10 (en)
mPOP series	POP10	Star POP10 (en)
mC-Print3 series	MCP31LB, MCP31CB	Star MCP31 (en)
mC-Print2 series	MCP20B	Star MCP20 (en)
	MCP21LB	Star MCP21 (en)
SM-L200 series	SM-L200	Star SM-L200 (en)
SM-L300 series	SM-L300	Star SM-L300 (en)
	SM-L304	Star SM-L304 (en)
SM-S220i series	SM-S220i	Star SM-S220i (en)
SM-S230i series	SM-S230i	Star SM-S230i (en)
SM-T300i series	SM-T300i, SM-T300	Star SM-T300i (en)
SM-T400i series	SM-T400i	Star SM-T400i (en)
SP700 series	SP742	Star SP700 Cutter (SP742) (en)

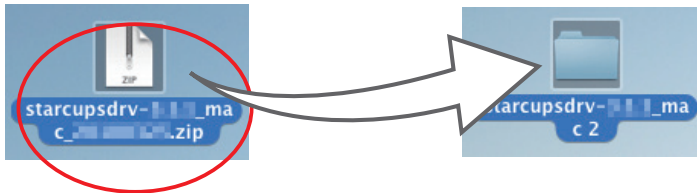
This completes the bluetooth printer installation and registration.

1.3 Uninstalling Star CUPS Drivers

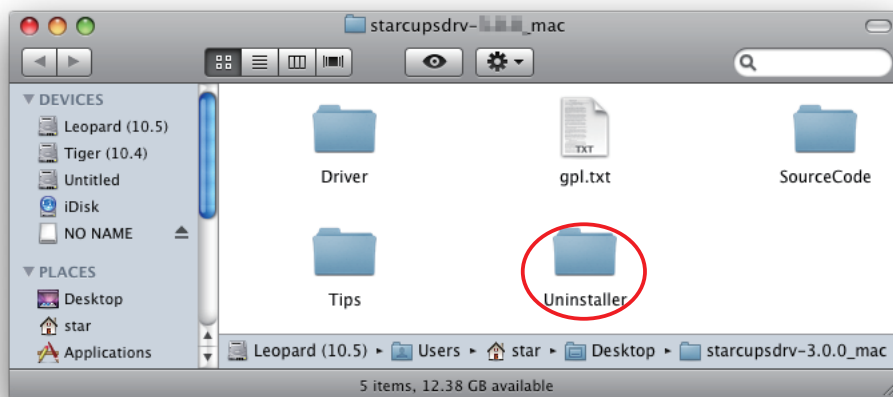
To uninstall the driver, proceed as follows.

Important : When you uninstall the Star CUPS Driver, all drivers for Star Printers installed on your Macintosh computer are deleted.
The setting file for Star Micronics Cloud Application installed at the same time is deleted as well.

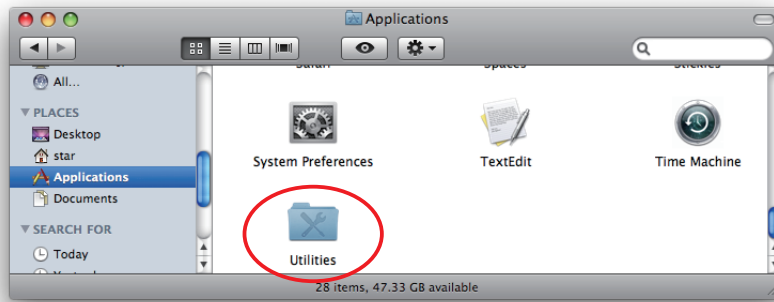
1. Turn off the power switch of the Printer.
2. Double-click [starcupsdrv-x.xx.x_mac_yyyymmdd.zip] you copied to your desktop to decompress it.



3. The screen below appears by double-clicking the expanded <starcupsdrv-x.xx.x_mac> file. Click on the "Uninstaller" folder to open it.



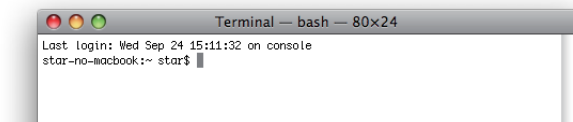
- Startup the Finder from the Mac OS X Dock and click [Applications] - [Utilities].



- Click on [Terminal].

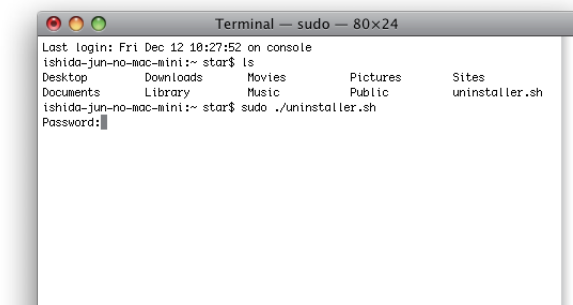


- The terminal starts up.



- Uninstall the Star Printer Driver by running the following command on your terminal.
When starting up, you will be prompted to input your user password.

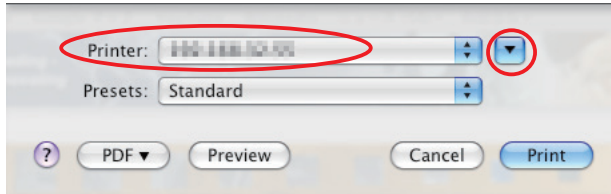
sudo ./uninstaller.sh



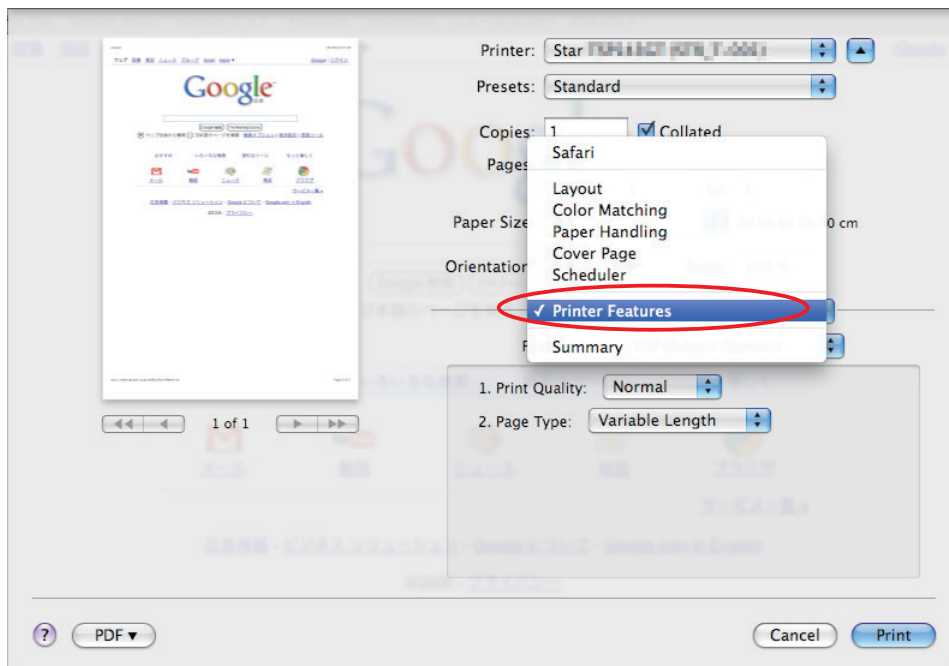
2. Setting Printer Functions

Use the dialog box opened by [File] -> [Print] in the Mac OS X menu.

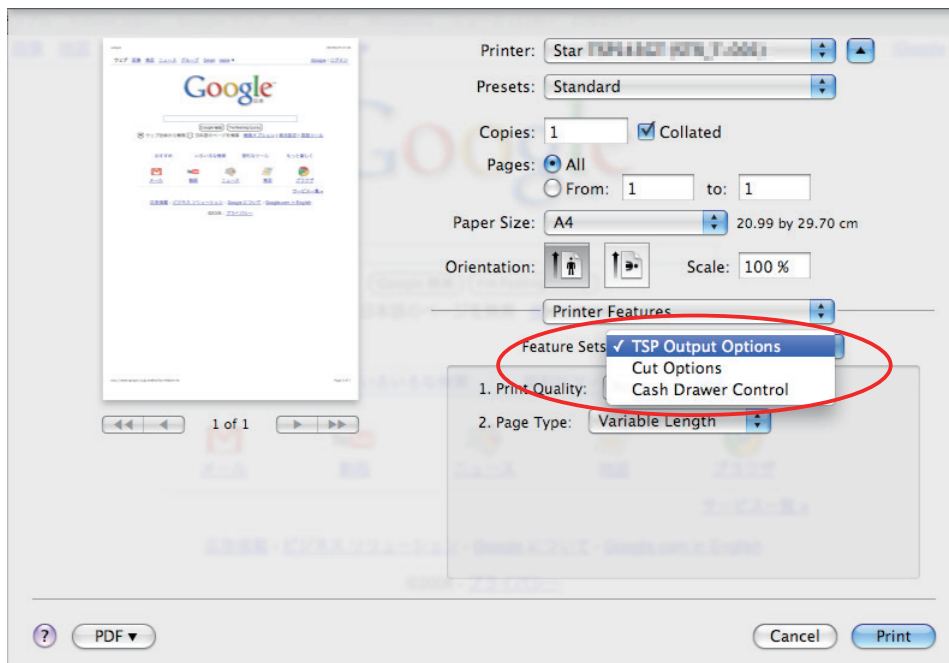
From the "Printer:" pull-down menu, select the printer name to set, then click [▼] to display the details.



Select "Printer Features" from the setting pull-down menu.



"Feature Sets:" Customizes printer operation.



2.1 Function List

Depending on the printer that you select, the functions that are displayed may differ, and only the ones displayed can be set. Refer to the function guide for details.

2.1.1 Thermal Printers

Output Options

• Print Speed:

Sets the print speed. Note that the setting also affects the print quality.

Setting	Default	Details
High	✓	Print speed has priority over quality.
Middle *		Print quality and speed are in the middle.
Low		Best quality, but slow print speed.

* Not supported by the mPOP series.

Point! This function is supported by the TSP100, TSP650II, TSP700II, TSP800II, FVP10, mPOP and mC-Print3 series.

• Print Density:

Sets the printing density.

Setting	Default	Details
-3 to -1 *		Larger value with -(minus) makes print density lighter.
Standard	✓	Prints with normal density.
+1 to +3 or +4		Larger value with +(plus) makes print density darker.

* Not supported by the mPOP series and mC-Print2.

Point! This function is supported by the TSP650II, FVP10, mPOP, mC-Print3 and mC-Print2 series.

• Page Type:

Sets the page type.

Setting	Default	Details
Variable Length	✓	Does not output blank data until the bottom of the page. Receipt ends after final data is printed.
Fixed Length		Outputs blank data as a blank until the bottom of the page. Receipt ends after printing the length specified by paper size.

• Top Search:

Selects whether the printer executes a reverse-feed before print.

Setting	Default	Details
Disable	✓	No reverse-feed before print.
Enable		Executes reverse-feed before print.

Point! This function is supported by TSP700II, TSP800II and FVP10 series.

Note: This function is available only when the **Cut Options** setting is configured to 'Full Cut'.
The function is not available when 'PartialCut' is selected.

When using the FVP10

Note: When switching the cutter mode, refer to the Hardware Manual, and configure the DIP switches and cutter settings correctly. Be particularly careful when you are using this function.

• Top Margin:

Selects whether the printer executes a reverse-feed before print.

Setting	Default	Details
Disable	✓	No reverse-feed before print. The default margins (11 mm) are applied.
2mm to 10mm		Executes reverse-feed before print.

Point! This function is supported by MCP31L, MCP31LB, MCP31C and MCP31CB.

Limitation for Top Margin Setting :

When the top margin is set to 10 mm or less, the paper length (cut length) should not exceed 50mm. (If the cut paper remains at the paper-exit, a paper jam may occur. There is no limitation when the cut paper is removed.)

Cut Options

• Page Cut Type:

This sets the cutting method for the end of all pages, excluding the last page.

Setting	Default	Details
No Cut	✓	Does not perform a cut and page feed.
Partial Cut		Feeds paper to cutting position, then cuts the paper, leaving one uncut point in center of paper.
Full Cut *		Paper is fed to cutting position, then a full cut is applied.
Cut *		Paper is fed to cutting position, then a full cut or partial cut is applied.

* This setting value is not supported depending on the model.

• Document Cut Type:

This sets the cutting method for the last page.

Setting	Default	Details
No Cut		Does not perform a cut and page feed.
Partial Cut	✓	Feeds paper to cutting position, then cuts the paper, leaving one uncut point in center of paper.
Full Cut *		Paper is fed to cutting position, then a full cut is applied.
Tear Bar		Paper is fed to the tear bar (cutting position).
Cut *		Paper is fed to cutting position, then a full cut or partial cut is applied.

* This setting value is not supported depending on the model.

When using the FVP10

Note: When switching the cutter mode, refer to the Hardware Manual, and configure the DIP switches and cutter settings correctly. Be particularly careful when you are using this function.

Data Treatment Recover From Error

• Data Treatment Recover From Error:

When an error occurs, you can handle the unprinted data which has already been sent to the printer as below.

Setting	Default	Details
No Use		After the recovery, the unprinted data of the remainder is printed after the recovery from the error.
Clear Data By Document Unit	✓	After the recovery, the unprinted data of the remainder is canceled after the recovery from the error.

Point! This function is supported by TSP650II, TSP700II, TSP800II, FVP10, mPOP, mC-Print3 and mC-Print2 series.

When using the TSP700II

Note: This feature does not operate correctly with old firmware. If you are using version less than 3.0 of the firmware, select 'No Use'. You can check the firmware version by executing Self-Printing. To update the printer's firmware, contact your STAR dealer.

Cash Drawer Control

• Cash Drawer:

This sets the operations of the cash drawer.

Setting	Default	Details
Do Not Open Drawers	✓	No cash drawer drive.
Open Drawer 1		Drives cash drawer 1 immediately after printing.
Open Drawer 2		Drives cash drawer 2 immediately after printing.
Open Drawer 1 and 2		Drives cash drawers 1 and 2 immediately after printing.

• Cash Drawer 1 Pulse Width:

This sets the cash drawer 1 pulse width.

Setting	Default	Details
10 milliseconds		Sets the pulse width to 0.01 seconds.
100 milliseconds		Sets the pulse width to 0.1 seconds.
200 milliseconds	✓	Sets the pulse width to 0.2 seconds.
300 milliseconds		Sets the pulse width to 0.3 seconds.
400 milliseconds		Sets the pulse width to 0.4 seconds.
500 milliseconds		Sets the pulse width to 0.5 seconds.
600 milliseconds		Sets the pulse width to 0.6 seconds.
700 milliseconds		Sets the pulse width to 0.7 seconds.
800 milliseconds		Sets the pulse width to 0.8 seconds.
900 milliseconds		Sets the pulse width to 0.9 seconds.
1000 milliseconds		Sets the pulse width to 1.0 seconds.
1100 milliseconds		Sets the pulse width to 1.1 seconds.
1200 milliseconds		Sets the pulse width to 1.2 seconds.

Note: The pulse width for cash drawer 2 is fixed at 200 milliseconds.

Buzzer 1 Control and Buzzer 2 Control

• Buzzer 1 (or Buzzer 2):

This sets the drive of either buzzer 1 or buzzer 2.

Setting	Default	Details
No Use	✓	Buzzer 1 or buzzer 2 is not used.
Document Top		Executes buzzer 1 (or 2) at the top of the document.
Document Bottom		Executes buzzer 1 (or 2) at the bottom of the document.

Cautions: When a device other than a buzzer or mC-Sound, such as a cash drawer, is connected, select 'No Use'. If the wrong setting is selected, the device may be damaged.

- **Buzzer 1 (Buzzer 2) - On Time:**

This sets the time to ring buzzer 1 or buzzer 2.

Setting	Default	Details
20 milliseconds	✓	Sets to 0.02 seconds.
40 milliseconds		Sets to 0.04 seconds.
100 milliseconds		Sets to 0.1 seconds.
200 milliseconds		Sets to 0.2 seconds.
500 milliseconds		Sets to 0.5 seconds.
1000 milliseconds		Sets to 1.0 seconds.
2000 milliseconds		Sets to 2.0 seconds.
5000 milliseconds		Sets to 5.0 seconds.

- **Buzzer 1 (Buzzer 2) - Off Time:**

This sets buzzer 1 or buzzer 2 off time.

Setting	Default	Details
20 milliseconds	✓	Sets to 0.02 seconds.
40 milliseconds		Sets to 0.04 seconds.
100 milliseconds		Sets to 0.1 seconds.
200 milliseconds		Sets to 0.2 seconds.
500 milliseconds		Sets to 0.5 seconds.
1000 milliseconds		Sets to 1.0 seconds.
2000 milliseconds		Sets to 2.0 seconds.
5000 milliseconds		Sets to 5.0 seconds.

- **Buzzer 1 (Buzzer 2) - Repeat:**

This sets the number of times to ring buzzer 1 (or buzzer 2) driven by the timing set at 1:Buzzer 1 (or Buzzer 2).

The buzzer will stop regardless of the number of times set to ring by pressing the "FEED".

Setting	Default	Details
1	✓	Rings buzzer 1 (or buzzer 2) Once.
2		Rings buzzer 1 (or buzzer 2) twice.
3		Rings buzzer 1 (or buzzer 2) three times.
5		Rings buzzer 1 (or buzzer 2) five times.
10		Rings buzzer 1 (or buzzer 2) ten times.
15		Rings buzzer 1 (or buzzer 2) fifteen times.
20		Rings buzzer 1 (or buzzer 2) twenty times.

Note : The buzzer ringing time and off time should not exceed 90 seconds in total.

Sound < FVP10 only >**• Document Top Sound:**

To play audio at the start of a document, select an audio file that is stored on the printer by specifying 'Sound n'.

Setting	Default	Details
No Sound	✓	Does not play audio at the top of the document.
Sound1 - Sound20		Plays the 'Sound n' audio data, which is registered in the printer, at the top of the document.

• Document Bottom Sound:

To play audio at the end of a document, select an audio file that is stored on the printer by specifying 'Sound n'.

Setting	Default	Details
No Sound	✓	Does not play audio at the end of a document.
Sound1 - Sound20		Plays the 'Sound n' audio data, which is registered in the printer, at the end of the document.

mC-Sound Control < mC-Print3 only >

• mC-Sound:

This sets mC-Sound operation.

Setting	Default	Details
No Use	✓	Does not activate mC-Sound.
Document Top		Executes mC-Sound at the top of the document.
Document Bottom		Executes mC-Sound at the bottom of the document.

Cautions :

- 1) When a device other than a buzzer or mC-Sound, such as a cash drawer, is connected, select 'No Use'. If the wrong setting is selected, the device may be damaged.
- 2) If you play sound from the printer drivers, the values which are set in 'Sound Area', 'Sound Number', and 'Volume' of mC-Sound Control will take priority. This will apply even when the sound source and volume are set using the mC-Sound DIP switches.

• mC-Sound - Sound Storage Area:

Selects the sound storage area for mC-Sound. The sound source can be set with the combination of sound storage area and sound number. The sound sources which can be set are as shown in the list of setting sound sources.

Setting	Default	Details
1	✓	Sets to sound storage area 1.
2		Sets to sound storage area 2.

• mC-Sound - Sound Number:

Selects the sound storage area for mC-Sound. The sound source can be set with the combination of sound storage area and sound number. The sound sources which can be set are as shown in the list of setting sound sources.

Setting	Default	Details
0	✓	Sets to sound number 0.
1		Sets to sound number 1.
2		Sets to sound number 2.
3		Sets to sound number 3.
4		Sets to sound number 4.
5		Sets to sound number 5.
6		Sets to sound number 6.
7		Sets to sound number 7.

■ Setting Sound Sources

Sound Storage Area	Sound Number	Sound Source
1	0	Sound1
1	1	Sound2
1	2	Sound3
1	3	Sound4
1	4	Sound5
1	5	Sound6
1	6	Sound7
1	7	Sound8

Sound Storage Area	Sound Number	Sound Source
2	0	Sound9
2	1	Sound10
2	2	Sound11
2	3	Sound12
2	4	Sound13
2	5	Sound14
2	6	Sound15
2	7	Sound16

- **mC-Sound - Sound Volume:**

Selects the mC-Sound sound volume.

Setting	Default	Details
0(Mute)		mC-Sound is muted.
1		Sets the mC-Sound sound volume to 1.
2(Low)		Sets the mC-Sound sound volume to 2.
3		Sets the mC-Sound sound volume to 3.
4		Sets the mC-Sound sound volume to 4.
5		Sets the mC-Sound sound volume to 5.
6(Medium)	✓	Sets the mC-Sound sound volume to 6.
7		Sets the mC-Sound sound volume to 7.
8		Sets the mC-Sound sound volume to 8.
9		Sets the mC-Sound sound volume to 9.
10		Sets the mC-Sound sound volume to 10.
11		Sets the mC-Sound sound volume to 11.
12(High)		Sets the mC-Sound sound volume to 12.
13		Sets the mC-Sound sound volume to 13.
14		Sets the mC-Sound sound volume to 14.
15		Sets the mC-Sound sound volume to 15.

- **mC-Sound - Repeat:**

Sets the number of times to repeat mC-Sound playback.

Setting	Default	Details
1	✓	Sets mC-Sound to play 1 time.
2		Sets mC-Sound to play 2 time.
3		Sets mC-Sound to play 3 time.
4		Sets mC-Sound to play 4 time.
5		Sets mC-Sound to play 5 time.
6		Sets mC-Sound to play 6 time.
7		Sets mC-Sound to play 7 time.
8		Sets mC-Sound to play 8 time.
9		Sets mC-Sound to play 9 time.
10		Sets mC-Sound to play 10 time.

2.1.2 Portable Printers

Output Options

- **Print Quality (Speed):**

Sets the print quality. Note that the setting also affects the print speed.

Setting	Default	Details
Standard (High Speed)	✓	Print speed has priority over quality.
High Quality (Low Speed)		Print quality and speed are in the middle.

- **Print Density:**

Sets the printing density.

Setting Value	Default	Details
High		Larger value with +(plus) makes print density darker.
Medium	✓	Prints with normal density.
Low		Larger value with -(minus) makes print density lighter.
Special		For paper with poor color developability such as labels.

- **Page Type:**

Sets the page type.

Setting	Default	Details
Variable Length	✓	Does not output blank data until the bottom of the page. Receipt ends after final data is printed.
Fixed Length		Outputs blank data as a blank until the bottom of the page. Receipt ends after printing the length specified by paper size.
Black Mark		Outputs blank data as a blank until the black mark. Receipt ends after the black mark is detected.
Black Mark (FRONT, BACK, Gap/Hole, 2inch, 3inch, Center)		Outputs blank data as a blank until the black mark. Receipt ends after the black mark is detected. FRONT: Configure this setting if you are using paper with black marks on its front side. BACK: Configure this setting if you are using paper with black marks on its back side. Gap/Hole: Configure this setting if you are using labels. 2inch: Configure this setting if you are using 2 inch paper with black marks. 3inch: Configure this setting if you are using 3 inch paper with black marks. Center: Configure this setting if you are using paper with black marks on its center.
Label(Gap)		If you want the printer to feed paper until the head of the label detected by the transmission sensor.

Feed Options

- **Page Feed Type:**

This sets the page feed operation for the end of all pages, excluding the last page.

Setting	Default	Details
No Feed	✓	The paper feed operation is not performed.
Tear Bar		Paper is fed to the tear bar (cutting position).

- **Document Feed Type:**

This sets the page feed operation for the last page.

Setting	Default	Details
No Feed		The paper feed operation is not performed.
Tear Bar	✓	Paper is fed to the tear bar (cutting position).

Black Mark Detection

- **Black Mark Detection:**

If this feature is set to **Enable**, the printer will detect the black mark position when turned on.

Setting	Default	Details
Disable	✓	At power on, does not execute paper feed in accordance with detection of black mark position.
Enable		At power on, feeds paper according to black mark position.

Data Treatment Recover From Error

- **Data Treatment Recover From Error:**

When an error occurs, you can handle the unprinted data which has already been sent to the printer as below.

Setting	Default	Details
No Use		After the recovery, the unprinted data of the remainder is printed after the recovery from the error.
Clear Data By Document Unit	✓	After the recovery, the unprinted data of the remainder is canceled after the recovery from the error.

2.1.3 Dot Matrix Printers

Output Options

- **Bidirectional Printing:**

Use this feature to select either unidirectional or bidirectional printing. Note that the setting affects both the print speed and the print quality. Available settings are as follows.

Setting	Default	Details
Budirectional	✓	Printer prints in both directions.
Unidirectional		Printer prints in one direction only.

- **Page Type:**

This sets the page type.

Setting	Default	Details
Variable Length	✓	Does not output blank data until the bottom of the page. Receipt ends after final data is printed.
Fixed Length		Outputs blank data as a blank until the bottom of the page. Receipt ends after printing the length specified by paper size.

- **Resolution:**

This sets the print quality (resolution).

Setting	Default Value	Details
170 x 72 DPI	✓	Print width is 170 dpi; print height is 72 dpi.
85 x 72 DPI		Print width is 85 dpi; print height is 72 dpi.

Data Treatment Recover From Error

- **Data Treatment Recover From Error:**

When an error occurs, you can handle the unprinted data which has already been sent to the printer as below.

Setting	Default	Details
No Use		After the recovery, the unprinted data of the remainder is printed after the recovery from the error.
Clear Data By Document Unit	✓	After the recovery, the unprinted data of the remainder is canceled after the recovery from the error.

Note : This feature does not operate correctly with old firmware. If you are using version 3.0 or earlier of the firmware, select 'No Use'. You can check the firmware version by executing Self-Printing. To update the printer's firmware, contact your STAR dealer.

Cut Options (Cutter Model)

• Page Cut Type:

This sets the cutting method for the end of all pages, excluding the last page.

Setting	Default	Details
No Cut	✓	Does not perform a cut and page feed.
Partial Cut		Feeds paper to cutting position, then cuts the paper, leaving one uncut point in center of paper.

• Document Cut Type:

This sets the cutting method for the last page.

Setting	Default	Details
No Cut		Does not perform a cut and page feed.
Partial Cut	✓	Feeds paper to cutting position, then cuts the paper, leaving one uncut point in center of paper.

Feed Options (Tear Bar Model)

• Page Feed Type:

This sets the page feed operation for the end of all pages, excluding the last page.

Setting	Default	Details
No Feed	✓	The paper feed operation is not performed.
Tear Bar		Paper is fed to the tear bar (cutting position).

• Document Feed Type:

This sets the page feed operation for the last page.

Setting	Default	Details
No Feed		The paper feed operation is not performed.
Tear Bar	✓	Paper is fed to the tear bar (cutting position).

Cash Drawer Control

• Cash Drawer:

This sets the operations of the cash drawer.

Setting	Default	Details
Do Not Open Drawers	✓	No cash drawer drive.
Open Drawer 1		Drives cash drawer 1 immediately after printing.
Open Drawer 2		Drives cash drawer 2 immediately after printing.
Open Drawer 1 and 2		Drives cash drawers 1 and 2 immediately after printing.

• Cash Drawer 1 Pulse Width:

This sets the cash drawer 1 pulse width.

Setting	Default	Details
10 milliseconds		Sets the pulse width to 0.01 seconds.
100 milliseconds		Sets the pulse width to 0.1 seconds.
200 milliseconds	✓	Sets the pulse width to 0.2 seconds.
300 milliseconds		Sets the pulse width to 0.3 seconds.
400 milliseconds		Sets the pulse width to 0.4 seconds.
500 milliseconds		Sets the pulse width to 0.5 seconds.
600 milliseconds		Sets the pulse width to 0.6 seconds.
700 milliseconds		Sets the pulse width to 0.7 seconds.
800 milliseconds		Sets the pulse width to 0.8 seconds.
900 milliseconds		Sets the pulse width to 0.9 seconds.
1000 milliseconds		Sets the pulse width to 1.0 seconds.
1100 milliseconds		Sets the pulse width to 1.1 seconds.
1200 milliseconds		Sets the pulse width to 1.2 seconds.

Note : 1) Do not enable the cash drawer and buzzer at the same time.
2) The pulse width for cash drawer 2 is fixed at 200 milliseconds.

Buzzer 1 Control and Buzzer 2 Control

• Buzzer 1 (or Buzzer 2):

This sets the drive of either buzzer 1 or buzzer 2.

Setting	Default	Details
No Use	✓	Buzzer 1 or buzzer 2 is not used.
Document Top		Executes buzzer 1 (or 2) at the top of the document.
Document Bottom		Executes buzzer 1 (or 2) at the bottom of the document.

Cautions : When a device other than a buzzer, such as a cash drawer, is connected, select 'No Use'. There is the possibility that the connected device and the circuit can be damaged by using the Buzzer Control command.

• Buzzer 1 (Buzzer 2) - On Time:

This sets the time to ring buzzer 1 or buzzer 2.

Setting	Default	Details
20 milliseconds	✓	Sets to 0.02 seconds.
40 milliseconds		Sets to 0.04 seconds.
100 milliseconds		Sets to 0.1 seconds.
200 milliseconds		Sets to 0.2 seconds.
500 milliseconds		Sets to 0.5 seconds.
1000 milliseconds		Sets to 1.0 seconds.
2000 milliseconds		Sets to 2.0 seconds.
5000 milliseconds		Sets to 5.0 seconds.

• Buzzer 1 (Buzzer 2) - Off Time:

This sets buzzer 1 or buzzer 2 off time.

Setting	Default	Details
20 milliseconds	✓	Sets to 0.02 seconds.
40 milliseconds		Sets to 0.04 seconds.
100 milliseconds		Sets to 0.1 seconds.
200 milliseconds		Sets to 0.2 seconds.
500 milliseconds		Sets to 0.5 seconds.
1000 milliseconds		Sets to 1.0 seconds.
2000 milliseconds		Sets to 2.0 seconds.
5000 milliseconds		Sets to 5.0 seconds.

• Buzzer 1 (Buzzer 2) - Repeat:

This sets the number of times to ring buzzer 1 (or buzzer 2) driven by the timing set at 1:Buzzer 1 (or Buzzer 2).

The buzzer will stop regardless of the number of times set to ring by pressing the "FEED".

Setting	Default	Details
1	✓	Rings buzzer 1 (or buzzer 2) Once.
2		Rings buzzer 1 (or buzzer 2) twice.
3		Rings buzzer 1 (or buzzer 2) three times.
5		Rings buzzer 1 (or buzzer 2) five times.
10		Rings buzzer 1 (or buzzer 2) ten times.
15		Rings buzzer 1 (or buzzer 2) fifteen times.
20		Rings buzzer 1 (or buzzer 2) twenty times.

Note : 1) Do not enable the cash drawer and buzzer at the same time.
2) The buzzer ringing time and off time should not exceed 90 seconds in total.

2.1.4 Kiosk Printers

Output Options

- **Print Density:**

Sets the printing density.

Setting	Default	Details
Standard	✓	Prints with normal density.
+1 to +3		Larger value with +(plus) makes print density darker.

- **Print Speed:**

Sets the print speed.

Setting	Default	Details
250mm	✓	Sets print speed to 250 mm/sec.
220mm		Sets print speed to 220 mm/sec.
200mm		Sets print speed to 200 mm/sec.
190mm		Sets print speed to 190 mm/sec.
170mm		Sets print speed to 170 mm/sec.
150mm		Sets print speed to 150 mm/sec.
130mm		Sets print speed to 130 mm/sec.
110mm		Sets print speed to 110 mm/sec.

- **Page Type:**

Sets the page type.

Setting	Default	Details
Variable Length	✓	Does not output blank data until the bottom of the page. Receipt ends after final data is printed.
Fixed Length		Outputs blank data as a blank until the bottom of the page. Receipt ends after printing the length specified by paper size.
Black Mark		Outputs blank data as a blank until the black mark. Receipt ends after the black mark is detected.
Label *		Outputs blank data as a blank until the the head of the label detected by the transmission sensor..

*This setting value is supported by Non-presenter model.

Note : Label* setting is supported by firmware 1.1 or later.

Also, it is not supported when the presenter and bezel are connected.

Mark Detection

• MarkDetection:

If this feature is set to **Enable**, the printer will detect the black mark or label position when turned on.

Setting	Default	Details
Disable	✓	At power on, does not execute paper feed in accordance with detection of black mark or label position.
Enable		At power on, feeds paper according to black mark or label position.

Cut Options

• Cut Type <Presenter only>:

This sets the cutting method.

Setting	Default	Details
Full Cut All Pages	✓	Cuts all pages.(Feeds each page to the cut position, then cuts it.)
Full Cut Last Pages		Cuts last page of document. (Does not cut each page.)

• Page Cut Type <Non-presenter only>:

This sets the cutting method for the end of all pages, excluding the last page.

Setting	Default	Details
No Cut	✓	Does not perform a cut and page feed.
Partial Cut		Feeds paper to cutting position, then cuts the paper, leaving one uncut point in center of paper.
Full Cut		Paper is fed to cutting position, then a full cut is applied.

• Document Cut Type <Non-presenter only>:

This sets the cutting method for the last page.

Setting	Default	Details
No Cut		Does not perform a cut and page feed.
Partial Cut	✓	Feeds paper to cutting position, then cuts the paper, leaving one uncut point in center of paper.
Full Cut		Paper is fed to cutting position, then a full cut is applied.

Data Treatment Recover From Error

• Data Treatment Recover From Error:

When an error occurs, you can handle the unprinted data which has already been sent to the printer as below.

Setting	Default	Details
No Use		After the recovery, the unprinted data of the remainder is printed after the recovery from the error.
Clear Data By Document Unit	✓	After the recovery, the unprinted data of the remainder is canceled after the recovery from the error.

Bezel Control (Optional) <Non-Presenter only>

• Bezel Hold Print:

Sets bezel operation.

Setting	Default	Details
Disable	✓	Print data no matter when paper is in the bezel or not.
Enable		Wait to print data until the paper in the bezel is removed.

Note : Bezel Hold Print function is supported by firmware 1.1 or later.

Presenter Control <Presenter only>

• Presenter Action:

Sets presenter operation.

Setting	Default	Details
Loop - Hold - Retract	✓	After printing is completed, presents (outputs and holds) the printed paper and waits for it to be removed. Retracts the paper if it is not removed within the specified retraction time.
Loop - Hold - Eject		After printing is completed, presents (outputs and holds) the printed paper and waits for it to be removed. Ejects the paper if it is not removed within the specified retraction time.
No Loop - Hold - Retract		Begins outputting the paper while printing is in progress, then holds it and waits for its removal. Retracts the paper if it is not removed within the specified retraction time.
No Loop - Hold - Eject		Begins outputting the paper while printing is in progress, then holds it and waits for its removal. Ejects the paper if it is not removed within the specified retraction time.
No Loop - No Hold - Eject		Outputs the paper while printing is in progress, and then ejects it. Does not hold the paper.

• Presenter Timeout:

Sets amount of time "Presenter Action".

Setting	Default	Details
Do Not Timeout	✓	Holds paper until it is removed.
10 - 120 seconds		Sets amount of time presenter will hold out the printed paper before either retracting or ejecting it. Can be set in 10-second increments.

Note : If the Presenter Action is set to "NoLoop - NoHold - Eject", the Presenter Timeout setting is meaningless and the presenter will eject the paper without holding it.

LED Control (Optional)

• LED Control:

Sets LED operation.

Setting	Default	Details
Disable	✓	LED not used.
Printing		Printing LED blinks during printing.
Error		Error LED blinks when error occurs. (paper out, etc.)
Printing + Error		Printing LED blinks during printing, and Error LED blink when error occur. (paper out, etc.)
Printing + Error + Idle		Printing LED blinks during printing, Error LED blink when error occur and Idle LED blinks or lights when idle.

Note : "Printing + Error + Idle" setting is supported by firmware 1.1 or later.

• Printing LED Interval:

Sets the blink interval for the Printing LED.

Setting	Default	Details
Default (100 millisec)	✓	Blink every 0.1 seconds.
200 millisec		Blink every 0.2 seconds.
500 millisec		Blink every 0.5 seconds.
1000 millisec		Blink every once per seconds.

• Error LED Interval:

Sets the blink interval for the Error LED.

Setting	Default	Details
Default (100 millisec)	✓	Blink every 0.1 seconds.
200 millisec		Blink every 0.2 seconds.
500 millisec		Blink every 0.5 seconds.
1000 millisec		Blink every once per seconds.

• Idle LED Interval:

Sets the lighting or blink interval for the Idle LED.

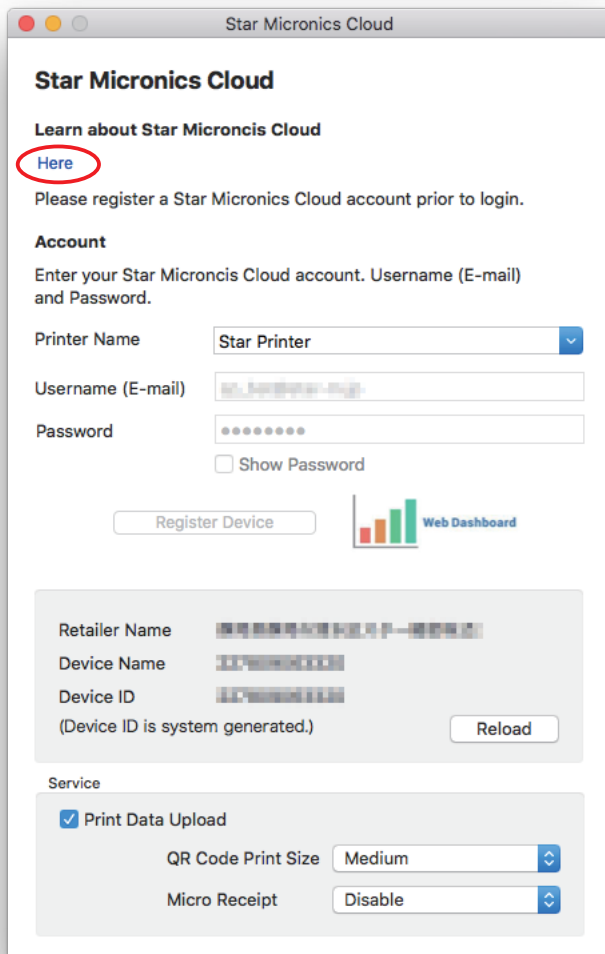
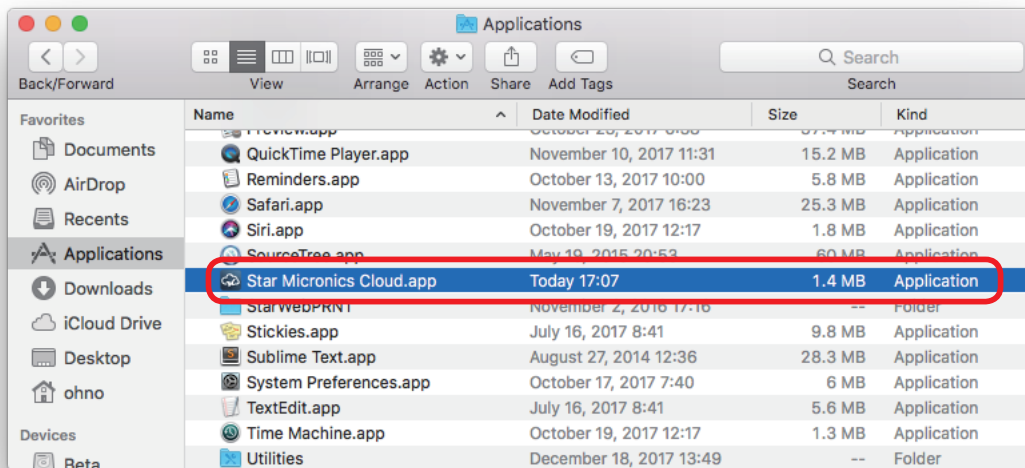
Setting	Default	Details
Default (Always On)	✓	Always lights.
100 millisec		Blink every 0.1 seconds.
200 millisec		Blink every 0.2 seconds.
500 millisec		Blink every 0.5 seconds.
1000 millisec		Blink every once per seconds.

Note : Idle LED Interval function is supported by firmware 1.1 or later.

2.2 Star Micronics Cloud

When you install this driver, the Star Micronics Cloud application will be installed automatically at the same time. Start [Star Micronics Cloud.app] from [Applications].

Note Star Cloud Services does not support dot printers.



To use the Star Micronics Cloud, it is required to register a Star Micronics Cloud account in advance.

Please click "Here" for details.

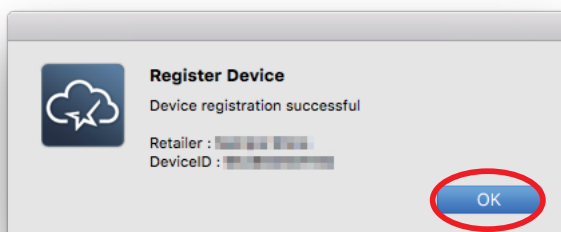
2.2.1 Device Registration

Register the device (Star printer queue) using your registered Star Micronics Cloud account.

Once you have registered the device, you can use the service of uploading print data to the cloud server and manage the registered device from the Star Micronics Cloud dashboard.

1. Select a device (a printer queue) which you would like to register(1).
2. Enter the username and the password of your registered Star Micronics Cloud account(2) and click "Register Device"(3).

3. When the device is registered successfully, the following dialog appears. Click OK.



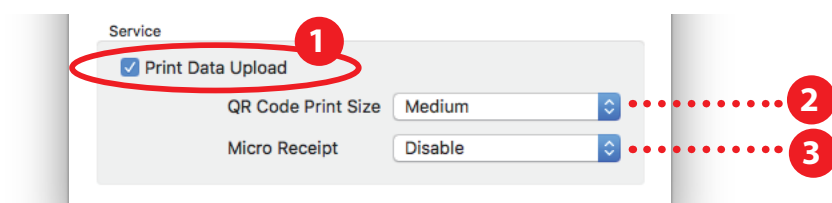
4. The account information of the connected Star Micronics Cloud appears. You can change the device name by connecting the dashboard with the registered account from "Connect to Dashboard Website"(4). When the device name is changed, click to [Reload] the device information on the screen(5).

2.2.2 Setting of Registration

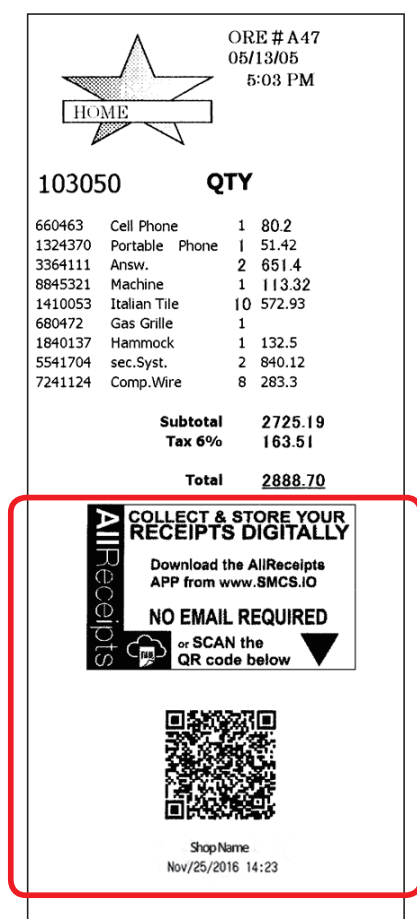
When "Print Data Upload" is checked ①, the QR code is added on the receipt and the data of printed receipt is uploaded on the Star Micronics Cloud Services.

The print size of QR code can be specified ②.

"Information + QR Code" or "Only QR Code" can be set to print without printing the original receipt data uploaded to the Star Micronics Cloud using the Micro Receipt function ③.



■ Disable



■ Information + QR Code



■ QR Code



Note : To upload data on the Star Micronics Cloud Services, the host device must be connected to the network. Please note that data may not be uploaded on the Star Micronics Cloud Services even though a QR code is added on the receipt depending on the condition of network connection.

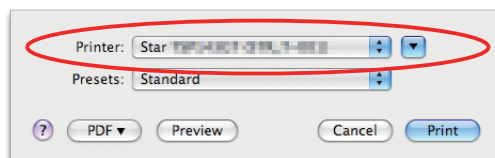
3. Setting the Paper Size

3.1 Setting the Paper Size

From the menu bar on Mac OS X, open [File] - [Printers].

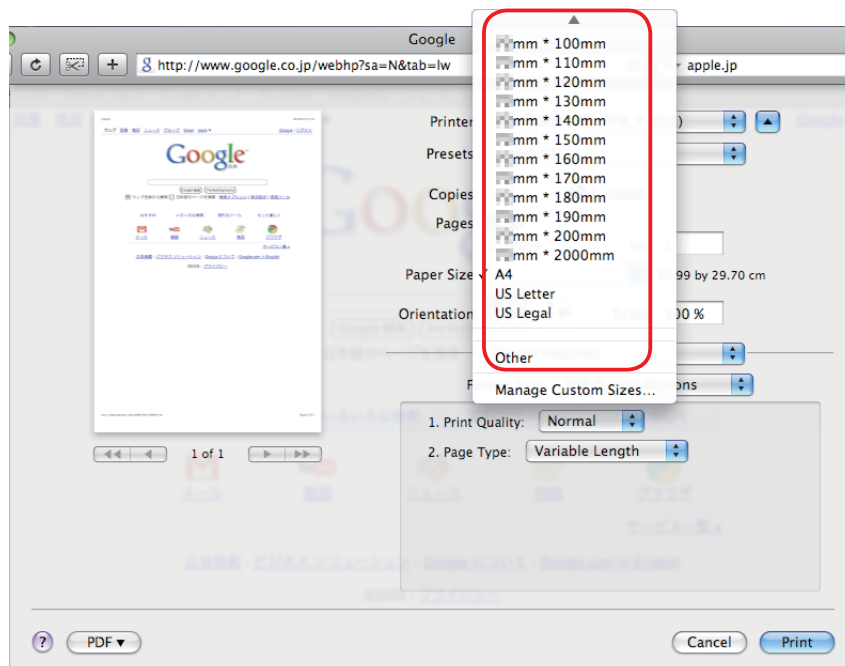
Select the printer to set from the "Printer:" pull-down menu.

If details are not displayed, click on [▼] to display them.



Next, select the paper size from the Paper Size pull-down menu.

See section 3.2 Settable Paper Sizes for details on the sizes of paper that can be used.



Point!

When a paper size is selected that exceeds the maximum printing width, the print is shrunk to fit the maximum printing width.

Limitations for Bluetooth models:

The maximum page length printable by Bluetooth printers is 1500 mm. Please specify the paper size within 1500 mm.

3.2 Settable Paper Sizes

The following paper sizes are available and can be set.

In some cases, these settings will not work as expected depending on the application being used to print from.

3.2.1 Thermal Printers

Paper Size	Supported Models				
	TSP100*	TSP654II	TSP700II	TSP800II	FVP10
50.8 * 30mm	○	○	○		○
50.8 * 40mm	○	○	○		○
⋮	⋮	⋮	⋮		⋮
50.8 * 190mm	○	○	○		○
50.8 * 200mm	○	○	○		○
50.8 * 1500mm		○	○		○
50.8 * 2000mm	○	○	○		○
52 * 30mm			○		○
52 * 40mm			○		○
⋮			⋮		⋮
52 * 190mm			○		○
52 * 200mm			○		○
52 * 1500mm			○		○
52 * 2000mm			○		○
52.5 * 30mm			○		○
52.5 * 40mm			○		○
⋮			⋮		⋮
52.5 * 190mm			○		○
52.5 * 200mm			○		○
52.5 * 1500mm			○		○
52.5 * 2000mm			○		○
72 * 30mm	○	○	○		○
72 * 40mm	○	○	○		○
⋮	⋮	⋮	⋮		⋮
72 * 190mm	○	○	○		○
72 * 200mm	○	○	○		○
72 * 1500mm		○	○		○
72 * 2000mm	○	○	○		○
80 * 30mm			○		
80 * 40mm			○		
⋮			⋮		
80 * 190mm			○		
80 * 200mm			○		
80 * 1500mm			○		
80 * 2000mm			○		
104 * 30mm				○	
104 * 40mm				○	
⋮				⋮	
104 * 190mm				○	
104 * 200mm				○	
104 * 1500mm				○	
104 * 2000mm				○	
A4	○	○	○	○	○
Letter	○	○	○	○	○
Legal	○	○	○	○	○

Paper Size	Supported Models		
	mPOP	mC-Print3	mC-Print2
48 * 100mm	○	○	○
48 * 200mm	○	○	○
48 * 1500mm	○	○	○
50.8 * 100mm	○	○	○
50.8 * 200mm	○	○	○
50.8 * 1500mm	○	○	○
54 * 100mm	○		○
54 * 200mm	○		○
54 * 1500mm	○		○
72 * 100mm		○	
72 * 200mm		○	
72 * 1500mm		○	
A4	○	○	○
Letter	○	○	○
Legal	○	○	○

* TSP100: TSP100IIIW/LAN/BI/U, TSP100IIU, TSP100U, TSP100GT, TSP100LAN

3.2.2 Portable Printers

Paper Size	Supported Models					
	SM-T300i SM-T300	SM-T400i	SM-S220i	SM-S230i	SM-L200	SM-L300
48mm * 100mm			○	○	○	
48mm * 200mm			○	○	○	
48mm * 1500mm			○	○	○	
50.8mm * 100mm						○
50.8mm * 200mm						○
50.8mm * 1500mm						○
72mm * 100mm	○					○
72mm * 200mm	○					○
72mm * 1500mm	○					○
104mm * 100mm		○				
104mm * 200mm		○				
104mm * 1500mm		○				
A4	○	○	○	○	○	○
Letter	○	○	○	○	○	○
Legal	○	○	○	○	○	○

3.2.3 Dot Matrix Printers

Paper Size	SP700	Paper Size	SP700
45 * 30mm	○	60 * 30mm	○
45 * 40mm	○	60 * 40mm	○
⋮	⋮	⋮	⋮
45 * 190mm	○	60 * 190mm	○
45 * 200mm	○	60 * 200mm	○
45 * 1500mm	○	60 * 1500mm	○
45 * 2000mm	○	60 * 2000mm	○
48 * 30mm	○	63 * 30mm	○
48 * 40mm	○	63 * 40mm	○
⋮	⋮	⋮	⋮
48 * 190mm	○	63 * 190mm	○
48 * 200mm	○	63 * 200mm	○
48 * 1500mm	○	63 * 1500mm	○
48 * 2000mm	○	63 * 2000mm	○

3.2.4 Kiosk Printers

Paper Size	Supported Models			
	SK1 311 SK1 321	SK1 311 Presenter	SK1 211 SK1 221	SK1 211 Presenter SK1 221 Presenter
54mm * 100mm	○	○	○	○
54mm * 200mm	○	○	○	○
54mm * 1500mm	○	○	○	○
56mm * 100mm	○	○	○	○
56mm * 200mm	○	○	○	○
56mm * 1500mm	○	○	○	○
68mm * 100mm	○	○		
68mm * 200mm	○	○		
68mm * 1500mm	○	○		
72mm * 100mm	○	○		
72mm * 200mm	○	○		
72mm * 1500mm	○	○		
80mm * 100mm	○	○		
80mm * 200mm	○	○		
80mm * 1500mm	○	○		
A4	○	○	○	○
Letter	○	○	○	○
Legal	○	○	○	○

4. Guidelines for Using an Ethernet Environment

The printer's IP address must be set in advance to use a printer that supports LAN using this driver. If your LAN environment does not allow acquisition of an IP address from a DHCP server, set the IP address to the printer in advance.

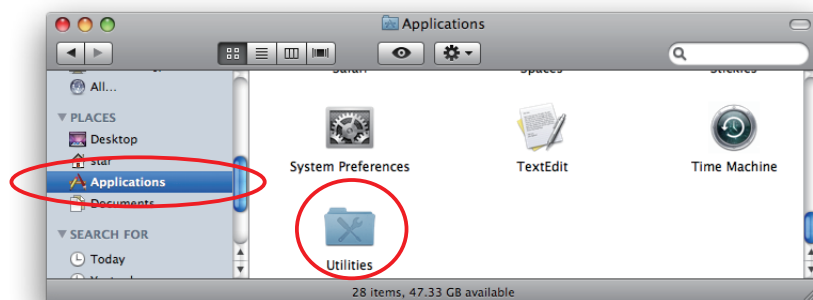
4.1 Setting a Temporary IP Address

Use the following procedures to set a temporary IP address to the printer.

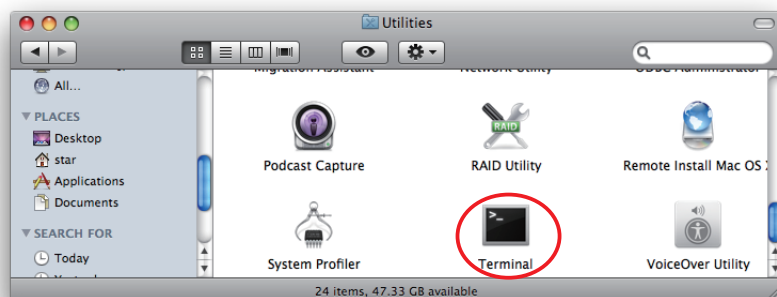
Important: Printer settings should be done by a user with administrator rights.

Point! A MAC address of the printer to be set is necessary for the temporary IP address. Confirm the MAC address in a self-print from the printer. See the Hardware Manual for details on running a self-print.

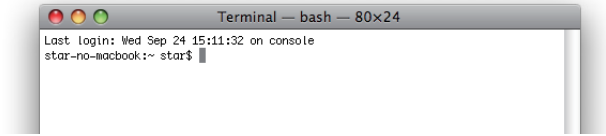
1. Connect the Ethernet cable to the printer and turn the power ON to the printer.
2. Startup the Finder from the Mac OS X Dock and click [Applications] - [Utilities].



3. Click on [Terminal].



3. The terminal starts up.



Execute the following command in the terminal to set a temporary IP address to the printer.

1. `sudo arp -d [Printer temporary IP address]`
2. `sudo arp -s [Printer temporary IP address] [Printer MAC address]`
3. `ping -c 4 [Printer temporary IP address]`
4. `sudo arp -d [Printer temporary IP address]`

Example of temporary IP address (192.168.222.217)

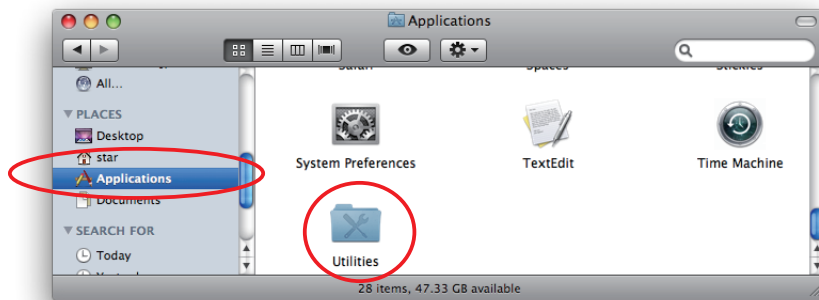
```
sudo arp -d 192.168.222.217
sudo arp -s 192.168.222.217 00:11:62:00:03:4D
ping -c 4 192.168.222.217
sudo arp -d 192.168.222.217
```

Note: The temporary IP address set here is erased when the printer power is turned off.
Continue by setting the IP address. (From (2) in section 4.2.)

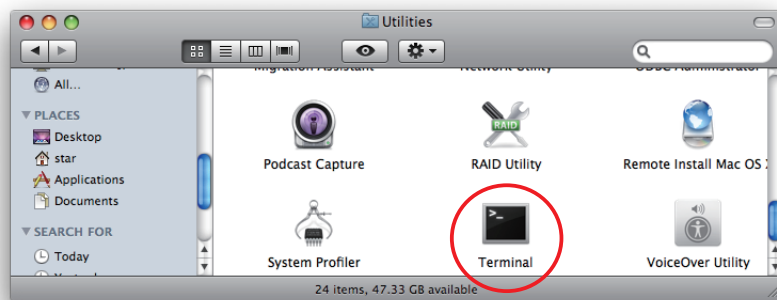
4.2 Setting the IP Address << StarPrinter TELNET Utility >>

The Telnet command connects directly to the printer to make settings.

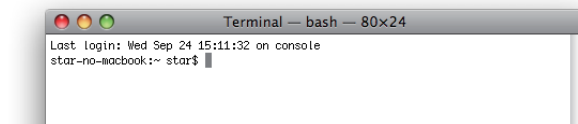
1. Connect the Ethernet cable to the printer and turn the power ON to the printer.
2. Startup the Finder from the Mac OS X Dock, and click [Applications] - [Utilities].



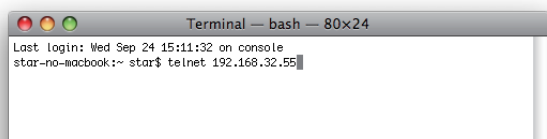
3. Click on [Terminal].



4. The terminal starts up.



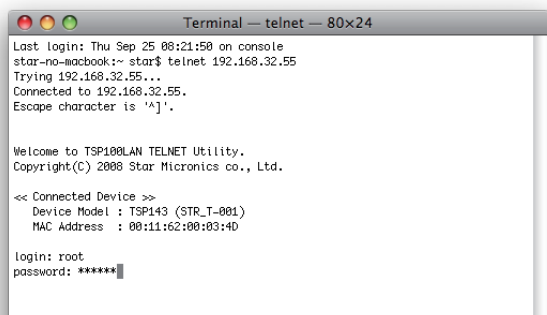
5. Use the Telnet command to connect to the printer to set.



Ex. >telnet 192.168.222.217 (The IP address of the printer to be set.)

Note: You cannot connect to a printer that does not have an IP address. See section 4.1 Setting a Temporary IP Address for details on setting such an address on the printer in advance.

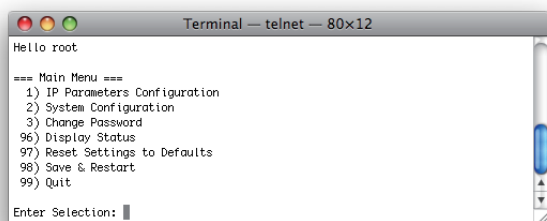
6. Log-in to the printer to be set as a "root" user.
The default password is "public."
To change the password, input the changed password.



7. The following menu is displayed.

- 1) IP Parameters Configuration
 - 2) System Configuration
 - 3) Change Password
 - 96) Display Status
 - 97) Reset Settings to Defaults
 - 98) Save and Restart
 - 99) Quit
- Enter Selection

Input the number that corresponds to your selection.



8. When all settings are completed, save the changes using "98(Save and Restart)" - "1(Save & Restart device & Configuration printing)", or "2 (Save & Restart device)". The settings of the printer will be saved. Reset the printer.

Example : Set the fixed IP address <192.168.222.55> on the printer set with the temporary IP address <192.168.222.217>, the check printing the setting contents.

>**telnet 192.168.222.217**

login : **root**

password : ********* (Use "public" when not making changes.)

Enter Selection : **1** (IP Parameters Configuration)

Enter Selection : **1** (Static)

Enter Selection : **1** (IP Address)

Enter IP address (x.x.x.x) : **192.168.222.55**

Enter Selection : **99** (Back to IP Address Menu)

Enter Selection : **99** (Back to Main Menu)

Enter Selection : **98** (Save & Restart)

Enter Selection : **1** (Save & Configuration printing & Restart device)

* The actual input portions are shown in bold characters.

5. Guidelines for Using the lpr Command

When printing using the lpr command from the command line, you can specify options with the following format.

```
$lpr -o [option]=[value] -o [option]=[value] ... [Filename]
```

In [option] • [value], specify the name shown in the command "specify name" in section 5.1 List of Supported Functions".

Also for options not specified, print using the default driver settings.

Point! Use the printer name confirmed using the "lpstat -p" command, when specifying the printer name using the option "-P".

Use Example 1

Printer Name : TSP143_ _STR_T_001_
 File Name : sample1.txt
 Paper Size * : 50.8 * 200mm
 Margin(top) * : 0mm
 Margin(bottom) * : 0mm
 Margin(left) * : 0mm
 Margin(right) * : 0mm

* This option is not a printer driver option, but an OS standard option.

```
$ lpr -P TSP143_ _STR_T_001_ -o media="X50D8MMY200MM"  
-o page-top=0 -o page-bottom=0 -o page-left=0  
-o page-right=0 sample1.txt
```

Use Example 2

File Name : sample2.txt
 Print Speed : Low

```
$ lpr -o PrintSpeed=2Low sample2.txt
```

Use Example 3

File Name : sample3.txt
 Document Cut Type : No Cut

```
$ lpr -o DocCutType=0NoCutDoc sample3.txt
```

5.1 Function List

See section 2.1 Function List for the details on the functions.

5.1.1 Thermal Printers

	Option Name		Command		Supported Model								
	option	value	[option]	[value]	TSP 143 *	TSP 654II	TSP 743II	TSP 847II	FVP 10	POP 10	MCP 30	MCP 31L/31LB/31C/31CB	MCP20/20B/21LB
Output Option	Print Speed	High	PrintSpeed	0High	●	●	●	●	●	●	●	●	
		Middle		1Middle	○	○	○	○	○		○	○	
		Low		2Low	○	○	○	○	○	○	○	○	
	Print Density	-3	PrintDensity	0Minus3		○			○		○	○	
		-2		1Minus2		○			○		○	○	
		-1		2Minus1		○			○		○	○	
		Standard		3ZERO		●			●	●	●	●	●
		+1		4Plus1		○			○	○	○	○	○
		+2		5Plus2		○			○	○	○	○	○
		+3		6Plus3		○			○	○	○	○	○
		+4		7Plus4							○	○	
	Page Type	Variable Length	PageType	0Variable	●	●	●	●	●	●	●	●	●
		Fixed Length		1Fixed	○	○	○	○	○	○	○	○	○
	Top Search	Disable	TopSearch	0Disable			●	●	●				
		Enable		1Enable			○	○	○				
	Top Margin	Disable	TopMargin	0Disable								●	
		2mm		1Millimeter2								○	
		3mm		2Millimeter3								○	
		4mm		3Millimeter4								○	
		5mm		4Millimeter5								○	
		6mm		5Millimeter6								○	
		7mm		6Millimeter7								○	
		8mm		7Millimeter8								○	
		9mm		8Millimeter9								○	
		10mm		9Millimeter10								○	
Cut Options (Cutter)	Page Cut Type	No Cut	PageCutType	0NoCutPage	●	●	●	●	●	●	●	●	●
		Partial Cut		1PartialCutPage	○	○	○	○		○	○	○	○
		Full Cut		2FullCutPage				○		○			○
		Cut		1CutPage					○				
	Document Cut Type	No Cut	DocCutType	0NoCutDoc	○	○	○	○	○	○	○	○	○
		Partial Cut		1PartialCutDoc	●	●	●	●		●	●	●	●
		Full Cut		2FullCutDoc			○	○		○			○
		Tear Bar		3TearBarDoc				○					
Data Treatment Recover From Error	Data Treatment Recover From Error	No Use	DataTreatment RecoverFrom Error	0NoUse		○	○	○	○	○	○	○	○
		Clear Data By Document Unit		1ClearDataBy DocumentUnit		●	●	●	●	●	●	●	●

* TSP143: TSP100IIW/LAN/BI/U, TSP100IU, TSP143U, TSP143GT, TSP143LAN

* ● is the default setting value.

	Option Name		Command Name		Supported Model								
	option	value	[option]	[value]	TSP 143 *	TSP 654II	TSP 743II	TSP 847II	FVP 10	POP 10	MCP 30	MCP 31L/31LB/31C/31CB	MCP20/20B/21LB
Cash Drawer Control	Cash Drawer	Do Not Open Drawers	CashDrawerSetting	0DoNotOpenDrawers	●	●	●	●	●	●	●	●	●
		Open Drawer 1		1OpenDrawer1	○	○	○	○	○	○	○	○	○
		Open Drawer 2		2OpenDrawer2	○	○	○	○	○	○	○	○	○
		Open Drawer 1 and 2		3OpenDrawer3	○	○	○	○	○	○	○	○	○
	Cash Drawer 1 Pulsh Width	10 milliseconds	CashDrawer1PulseWidth	0Millis10	○	○	○	○	○	○	○	○	○
		100 milliseconds		1Millis100	○	○	○	○	○	○	○	○	○
		200 milliseconds		2Millis200	●	●	●	●	●	●	●	●	●
		300 milliseconds		3Millis300	○	○	○	○	○	○	○	○	○
		400 milliseconds		4Millis400	○	○	○	○	○	○	○	○	○
		500 milliseconds		5Millis500	○	○	○	○	○	○	○	○	○
		600 milliseconds		6Millis600	○	○	○	○	○	○	○	○	○
		700 milliseconds		7Millis700	○	○	○	○	○	○	○	○	○
		800 milliseconds		8Millis800	○	○	○	○	○	○	○	○	○
		900 milliseconds		9Millis900	○	○	○	○	○	○	○	○	○
		1000 milliseconds		10Millis1000	○	○	○	○	○	○	○	○	○
		1100 milliseconds		11Millis1100	○	○	○	○	○	○	○	○	○
		1200 milliseconds		12Millis1200	○	○	○	○	○	○	○	○	○
Buzzer1 Control / Buzzer2 Control	Buzzer1 / Buzzer2	No Use	Buzzer1Setting /	0NoUse		●	●		●		●	●	●
		Document Top	Buzzer2Setting	1DocumentTop		○	○		○		○	○	○
		Document Bottom		2DocumentBtm		○	○		○		○	○	○
	Buzzer1 - On Time / Buzzer2 - On Time	20 milliseconds	Buzzer1OnTime /	0Millis20		●	●		●		●	●	●
		40 milliseconds	Buzzer2OnTime	1Millis40		○	○		○		○	○	○
		100 milliseconds		2Millis100		○	○		○		○	○	○
		200 milliseconds		3Millis200		○	○		○		○	○	○
		500 milliseconds		4Millis500		○	○		○		○	○	○
		1000 milliseconds		5Millis1000		○	○		○		○	○	○
		2000 milliseconds		6Millis2000		○	○		○		○	○	○
		5000 milliseconds		7Millis5000		○	○		○		○	○	○
	Buzzer1 - Off Time / Buzzer2 - Off Time	20 milliseconds	Buzzer1OffTime /	0Millis20		●	●		●		●	●	●
		40 milliseconds	Buzzer2OffTime	1Millis40		○	○		○		○	○	○
		100 milliseconds		2Millis100		○	○		○		○	○	○
		200 milliseconds		3Millis200		○	○		○		○	○	○
		500 milliseconds		4Millis500		○	○		○		○	○	○
		1000 milliseconds		5Millis1000		○	○		○		○	○	○
		2000 milliseconds		6Millis2000		○	○		○		○	○	○
		5000 milliseconds		7Millis5000		○	○		○		○	○	○
	Buzzer1 - Repeat / Buzzer2 - Repeat	1	Buzzer1Repeat /	0Repeat1		●	●		●		●	●	●
		2	Buzzer2Repeat	1Repeat2		○	○		○		○	○	○
		3		2Repeat3		○	○		○		○	○	○
		5		3Repeat5		○	○		○		○	○	○
		10		4Repeat10		○	○		○		○	○	○
		15		5Repeat15		○	○		○		○	○	○
		20		6Repeat20		○	○		○		○	○	○

* ● is the default setting value.

	Option Name		Command Name		Supported Model								
	option	value	[option]	[value]	TSP 143 *	TSP 654II	TSP 743II	TSP 847II	FVP 10	POP 10	MCP 30	MCP 31L/ 31LB/ 31C/ 31CB	MCP20/ 20B/ 21LB
Sound	Document Top Sound	No Sound	DocumentTopSound	0NoSound					●				
		Sound1		1Sound					○				
		Sound2		2Sound					○				
		•		•					•				
		•		•					•				
		•		•					•				
		Sound19		19Sound					○				
		Sound20		20Sound					○				
	Document Bottom Sound	No Sound	DocumentBottomSound	0NoSound					●				
		Sound1		1Sound					○				
		Sound2		2Sound					○				
		•		•					•				
		•		•					•				
		•		•					•				
		Sound19		19Sound					○				
		Sound20		20Sound					○				

* ● is the default setting value.

Option Name		Command Name		Supported Model								
option	value	[option]	[value]	TSP 143 *	TSP 654II	TSP 743II	TSP 843II	FVP 10	POP 10	MCP 30	MCP 31L/ 31LB/ 31C/ 31CB	MCP 20/20B/ 21LB
mC-Sound Control	mC-Sound	No Use	MelodySpeaker Setting	0NoUse						●	●	
		Document Top		1DocumentTop						○	○	
		Document Bottom		2DocumentBtm						○	○	
	mC-Sound Sound Storage Area	1	MelodySpeaker SoundStorageArea	0Area1						●	●	
		2		1Area2						○	○	
	mC-Sound Sound Number	0	MelodySpeaker SoundNumber	0Number0						●	●	
		1		1Number1						○	○	
		2		2Number2						○	○	
		3		3Number3						○	○	
		4		4Number4						○	○	
		5		5Number5						○	○	
		6		6Number6						○	○	
		7		7Number7						○	○	
	mC-Sound Sound Volume	0(Mute)	MelodySpeaker SoundVolume	0Volume0						○	○	
		1		1Volume1						○	○	
		2(Low)		2Volume2						○	○	
		3		3Volume3						○	○	
		4		4Volume4						○	○	
		5		5Volume5						○	○	
		6(Medium)		6Volume6						●	●	
		7		7Volume7						○	○	
		8		8Volume8						○	○	
		9		9Volume9						○	○	
		10		10Volume10						○	○	
		11		11Volume11						○	○	
		12(High)		12Volume12						○	○	
		13		13Volume13						○	○	
		14		14Volume14						○	○	
		15		15Volume15						○	○	
	mC-Sound Repeat	1	MelodySpeaker Repeat	0Repeat1						●	●	
		2		1Repeat2						○	○	
		3		2Repeat3						○	○	
		4		3Repeat4						○	○	
		5		4Repeat5						○	○	
		6		5Repeat6						○	○	
		7		6Repeat7						○	○	
		8		7Repeat8						○	○	
		9		8Repeat9						○	○	
		10		9Repeat10						○	○	

* ● is the default setting value.

5.1.2 Portable Printers

	Option Name		Command		Default setting value
	option	value	[option]	[value]	
Output Options	Print Quality(Speed)	Standard(High Speed)	PrintSpeed	0High	○
		High Quality(Low Speed)		1Low	
	Print Density	Special	PrintDensity	0Special	
		High		1High	
		Medium		2Medium	○
		Low		3Low	
	Page Type	Variable Length	PageType	0Variable	○
		Fixed Length		1Fixed	
		Black Mark		2BlackMark	
		Black Mark(FRONT)		3FrontBlackMark	
		Black Mark(BACK)		4BackBlackMark	
		Black Mark(Gap/Hole)		5GapHoleBlackMark	
		Black Mark(3inch)		6BlackMarkThreeInch	
		Black Mark(2inch)		7BlackMarkTwoInch	
		Black Mark(Center)		8BlackMarkCenter	
		Label(Gap)		9Label	
Feed Options	Page Feed Type	No Feed	PageCutType	0NoCutPage	○
		Tear Bar		1TearBarPage	
	Document Feed Type	No Feed	DocCutType	0NoCutDoc	
		Tear Bar		1TearBarDoc	○
Data Treatment Recover From Error	Data Treatment Recover From Error	No Use	DataTreatmentRecoverFromError	0NoUse	
		Clear Data By Document Unit		1ClearDataByDocument Unit	○
Black Mark Detection	Black Mark Detection	Disable	BlackMarkDetection	1Disable	○
		Enable		2Enable	

5.1.3 Dot Matrix Printers

	Option Name		Command		Supported Model			
	option	value	[option]	[value]	SP712	SP717	SP742	SP747
Output Option	Bidirectional Printing	Bidirectional	BidiPrinting	0Bidirectional	●	●	●	●
		Unidirectional		1Unidirectional	○	○	○	○
	Page Type	Variable Length	PageType	0Variable	●	●	●	●
		Fixed Length		1Fixed	○	○	○	○
	Resolution	170 x 72 DPI	Resolution	170x72dpi	●	●	●	●
		85 x 72 DPI		85x72dpi	○	○	○	○
Cut Options (Cutter)	Page Cut Type	No Cut	PageCutType	0NoCutPage			●	●
		Partial Cut		1PartialCutPage			○	○
		Full Cut		2FullCutPage				
	Document Cut Type	No Cut	DocCutType	0NoCutDoc			○	○
		Partial Cut		1PartialCutDoc			●	●
		Full Cut		2FullCutDoc				
Feed Options (TearBar)	Page Feed Type	No Feed	PageCutType	0NoCutPage	●	●		
		Tear Bar		3TearBarPage	○	○		
	Document Feed Type	No Feed	DocCutType	0NoCutDoc	○	○		
		Tear Bar		3TearBarDoc	●	●		
Cash Drawer Control	Cash Drawer	Do Not Open Drawers	CashDrawerSetting	0DoNotOpenDrawers	●	●	●	●
		Open Drawer 1		1OpenDrawer1	○	○	○	○
		Open Drawer 2		2OpenDrawer2	○	○	○	○
		Open Drawer 1 and 2		3OpenDrawer3	○	○	○	○
	Cash Drawer 1 Pulsh Width	10 milliseconds	CashDrawer1PulseWidth	0Millis10	○	○	○	○
		100 milliseconds		1Millis100	○	○	○	○
		200 milliseconds		2Millis200	●	●	●	●
		300 milliseconds		3Millis300	○	○	○	○
		400 milliseconds		4Millis400	○	○	○	○
		500 milliseconds		5Millis500	○	○	○	○
		600 milliseconds		6Millis600	○	○	○	○
		700 milliseconds		7Millis700	○	○	○	○
		800 milliseconds		8Millis800	○	○	○	○
		900 milliseconds		9Millis900	○	○	○	○
		1000 milliseconds		10Millis1000	○	○	○	○
		1100 milliseconds		11Millis1100	○	○	○	○
		1200 milliseconds		12Millis1200	○	○	○	○
Data Treatment Recover From Error	Data Treatment Recover From Error	No Use	DataTreatmentRecoverFromError	0NoUse	○	○	○	○
		Clear Data By Document Unit		1ClearDataByDocumentUnit	●	●	●	●

* ● is the default setting value.

	Option Name		Command		Supported Model			
	option	value	[option]	[value]	SP712	SP717	SP742	SP747
Buzzer1 Control / Buzzer2 Control	Buzzer1 /	No Use	Buzzer1Setting /	0NoUse	●	●	●	●
	Buzzer2	Document Top	Buzzer2Setting	1DocumentTop	○	○	○	○
		Document Bottom		2DocumentBtm	○	○	○	○
	Buzzer1 - On Time /	20 milliseconds	Buzzer1OnTime /	0Millis20	●	●	●	●
	Buzzer2 - On Time	40 milliseconds	Buzzer2OnTime	1Millis40	○	○	○	○
		100 milliseconds		2Millis100	○	○	○	○
		200 milliseconds		3Millis200	○	○	○	○
		500 milliseconds		4Millis500	○	○	○	○
		1000 milliseconds		5Millis1000	○	○	○	○
		2000 milliseconds		6Millis2000	○	○	○	○
		5000 milliseconds		7Millis5000	○	○	○	○
	Buzzer1 - Off Time /	20 milliseconds	Buzzer1OffTime /	0Millis20	●	●	●	●
	Buzzer2 - Off Time	40 milliseconds	Buzzer2OffTime	1Millis40	○	○	○	○
		100 milliseconds		2Millis100	○	○	○	○
		200 milliseconds		3Millis200	○	○	○	○
		500 milliseconds		4Millis500	○	○	○	○
		1000 milliseconds		5Millis1000	○	○	○	○
		2000 milliseconds		6Millis2000	○	○	○	○
		5000 milliseconds		7Millis5000	○	○	○	○
	Buzzer1 - Repeat /	1	Buzzer1Repeat /	0Repeat1	●	●	●	●
	Buzzer2 - Repeat	2	Buzzer2Repeat	1Repeat2	○	○	○	○
		3		2Repeat3	○	○	○	○
		5		3Repeat5	○	○	○	○
		10		4Repeat10	○	○	○	○
		15		5Repeat15	○	○	○	○
		20		6Repeat20	○	○	○	○

* ● is the default setting value.

5.1.4 Kiosk Printers

	Option Name		Command		Supported Model			
	option	value	[option]	[value]	SK1-211/221	SK1-211/221 presenter	SK1-311/321	SK1-311 presenter
Output Options	Print Density	Standard	PrintDensity	3ZERO	●	●	●	●
		+1		4Plus1	○	○	○	○
		+2		5Plus2	○	○	○	○
		+3		6Plus3	○	○	○	○
	Print Speed	250mm	PrintSpeed	0_250mm	●	●	●	●
		220mm		1_220mm	○	○	○	○
		200mm		2_200mm	○	○	○	○
		190mm		3_190mm	○	○	○	○
		170mm		4_170mm	○	○	○	○
		150mm		5_150mm	○	○	○	○
		130mm		6_130mm	○	○	○	○
		110mm		7_110mm	○	○	○	○
	Page Type	Variable Length	PageType	0Variable	●	●	●	●
		Fixed Length		1Fixed	○	○	○	○
		Black Mark		2BlackMark	○	○	○	○
		Label		9Label	○		○	
Mark Detection	MarkDetection	Disable	BlackMark Detection	1Disable	●	●	●	●
		Enable		2Enable	○	○	○	○
Cut Options	Cut Type	Full Cut All Pages	CutType	0FullCutAllPages		●		●
		Full Cut Last Pages		1FullCutLastPages		○		○
	Page Cut Type	No Cut	PageCutType	0NoCutPage	●		●	
		Partial Cut		1PartialCutPage	○		○	
		Full Cut		2FullCutPage	○		○	
	Document Cut Type	No Cut	DocCutType	0NoCutDoc	○		○	
		Partial Cut		1PartialCutDoc	●		●	
		Full Cut		2FullCutDoc	○		○	
Bezel Control (Optional)	Bezel Hold Print	Disable	BezelHoldPrint	0Disable	●		●	
		Enable		1Enable	○		○	
Presenter Control	Presenter Action	Loop - Hold - Retract	Presenter Action	0LoopHoldRetract		●		●
		Loop - Hold - Eject		1LoopHoldEject		○		○
		No Loop - Hold - Retract		2NoLoopHoldRetract		○		○
		No Loop - Hold - Eject		3NoLoopHoldEject		○		○
		No Loop - No Hold - Eject		4NoLoopNoHoldEject		○		○
	Presenter Timeout	Do Not Timeout	Presenter Timeout	0DoNotTimeout		●		●
		10 seconds		1Timeout10sec		○		○
		20 seconds		2Timeout20sec		○		○
		30 seconds		3Timeout30sec		○		○
		40 seconds		4Timeout40sec		○		○
		50 seconds		5Timeout50sec		○		○
		60 seconds		6Timeout60sec		○		○
		70 seconds		7Timeout70sec		○		○
		80 seconds		8Timeout80sec		○		○
		90 seconds		9Timeout90sec		○		○
		100 seconds		10Timeout100sec		○		○
		110 seconds		11Timeout110sec		○		○
		120 seconds		12Timeout120sec		○		○

	Option Name		Command		Supported Model			
	option	value	[option]	[value]	SK1-211/221	SK1-211/221 Presenter	SK1-311/321	SK1-311 Presenter
LED Control (Optional)	LED Control	Disable	LEDControl	0Disable	●	●	●	●
		Printing		1PrintingLEDEnable	○	○	○	○
		Error		2ErrorLEDEnable	○	○	○	○
		Printing + Error		3PrintingAndErrorLEDEnable	○	○	○	○
		Printing + Error + Idle		4PrintingAndErrorAndIdleLEDEnable	○	○	○	○
	Printing LED Interval	Default (100 millisec)	Printing LEDInterval	0PrintingLEDDefault	●	●	●	●
		200 millisec		1PrintingLED200milliseconds	○	○	○	○
		500 millisec		2PrintingLED500milliseconds	○	○	○	○
		1000 millisec		3PrintingLED1000milliseconds	○	○	○	○
	Error LED Interval	Default (100 millisec)	ErrorLEDInterval	0ErrorLEDDefault	●	●	●	●
		200 millisec		1ErrorLED200milliseconds	○	○	○	○
		500 millisec		2ErrorLED500milliseconds	○	○	○	○
		1000 millisec		3ErrorLED1000milliseconds	○	○	○	○
	Idle LED Interval	Default (Always On)	IdleLEDInterval	0IdleLEDDefault	●	●	●	●
		100 millisec		1IdleLED100milliseconds	○	○	○	○
		200 millisec		2IdleLED200milliseconds	○	○	○	○
		500 millisec		3IdleLED500milliseconds	○	○	○	○
		1000 millisec		4IdleLED1000milliseconds	○	○	○	○
Data Treatment Recover From Error	DataTreatmentRecoverFromError	No Use	DataTreatmentRecoverFromError	0NoUse	○	○	○	○
		Clear Data By Document Unit		1ClearDataByDocumentUnit	●	●	●	●

6. Confirmed Operating Environments

macOS 10.15, macOS 10.14, macOS 10.13, macOS 10.12, Mac OS X 10.11

- iMac (Mid 2017)
- Mac mini (Late 2014)

7. Revision History

Rev. No.	Date	Content
Rev. 1.0	Jan, 2009	New release.
Rev. 2.0	Jun, 2009	Error correction.
Rev. 3.0	Mar. 2010	Added a new model "TSP800II".
Rev. 4.0	Sep. 2010	Added support for Star cups Driver 3.2.0. Added support for new models of 'Data Treatment Recover From Error Command' and 'Buzzer Command'.
Rev. 5.0	Feb. 2013	Added a new model "TSP654II". Added support for Mac OS X 10.7, Mac OS X 10.8.
Rev. 5.1	May 2013	Error correction.
Rev. 6.0	Jan. 2015	Added support for Bluetooth.
Rev. 6.1	Jun. 2016	Added new models TSP100IIIW / LAN / BI. Added support for Mac OS X 10.11
Rev. 6.2	Oct. 2016	Added support Star Cloud Services Added support for Mac OS X 10.12. Mac OS X 10.5 to 10.8 end of support.
Rev. 6.3	Mar. 2017	Added new models TSP100IIIU and mPOP.
Rev. 6.4	May 2017	Added support for Micro Receipt function of Star Cloud Services
Rev. 6.5	Jun. 2018	Added new models mC-Print3 and mC-Print2. Mac OS X 10.9 end of support.
Rev. 6.6	Nov. 2018	Added support for macOS 10.14. mC-Sound is supported.
Rev. 6.7	Jul. 2019	Added a new model MCP30 (mC-Print3 series).
Rev. 7.0	Dec. 2019	Added support for macOS 10.15. Mac OS X 10.10 end of support. Integrate manuals (Thermal Printers, FVP10, Portable Printers and Dot Matrix Printers) Added a new model SK1 series and SK1 Presenter series.
Rev. 7.1	May 2020	MCP31C and MCP31CB (mC-Print3 series) are supported.



URL: <http://www.starmicronics.com/support/>